

MADE IN ITALY. MADE TO EXCEL.

BOOST

EXPRESSION

Interactive version



CONCRETE LOOK

WALL TILES

Rivestimenti
Revêtements
Wandfliesen
Revestimientos
Настенная плитка

PORCELAIN TILES

Gres Porcellanato
Grès cérame
Feinsteinzeug
Gres porcelánico
Керамический гранит



Atlas Concorde is one of the leading global brands in the production of ceramic tiles and large slabs for design and architecture. With over 50 years of history, two production plants, and numerous showroom in the capitals of international design, Atlas Concorde offers integrated and sustainable ceramic systems for floors, walls, outdoor spaces, worktops, bathroom furnishings, facades and special projects. Design your world with Atlas Concorde.

Atlas Concorde è uno dei principali brand mondiali nella produzione di superfici e grandi lastre ceramiche per il design e l'architettura. Con oltre cinquant'anni di storia, due stabilimenti produttivi, numerose showroom nelle capitali della progettazione internazionale, offriamo sistemi ceramici integrati e sostenibili per pavimenti, rivestimenti, outdoor, piani di lavoro, arredo bagno, facciate e progetti speciali. Design your world with Atlas Concorde.

atlasconcorde.com

INDEX

- ↳ INSPIRATION
- ↳ THE COLLECTION
- ↳ SURFACE RANGE & TECHNICAL SPECIFICATION

Collection in collaboration
with **Elisa Ossino**

INDEX



INSPIRATION



THE COLLECTION



SURFACE
RANGE &
TECHNICAL
SPECS



ENJOY
THE VIDEO



INDEX



INSPIRATION



THE COLLECTION



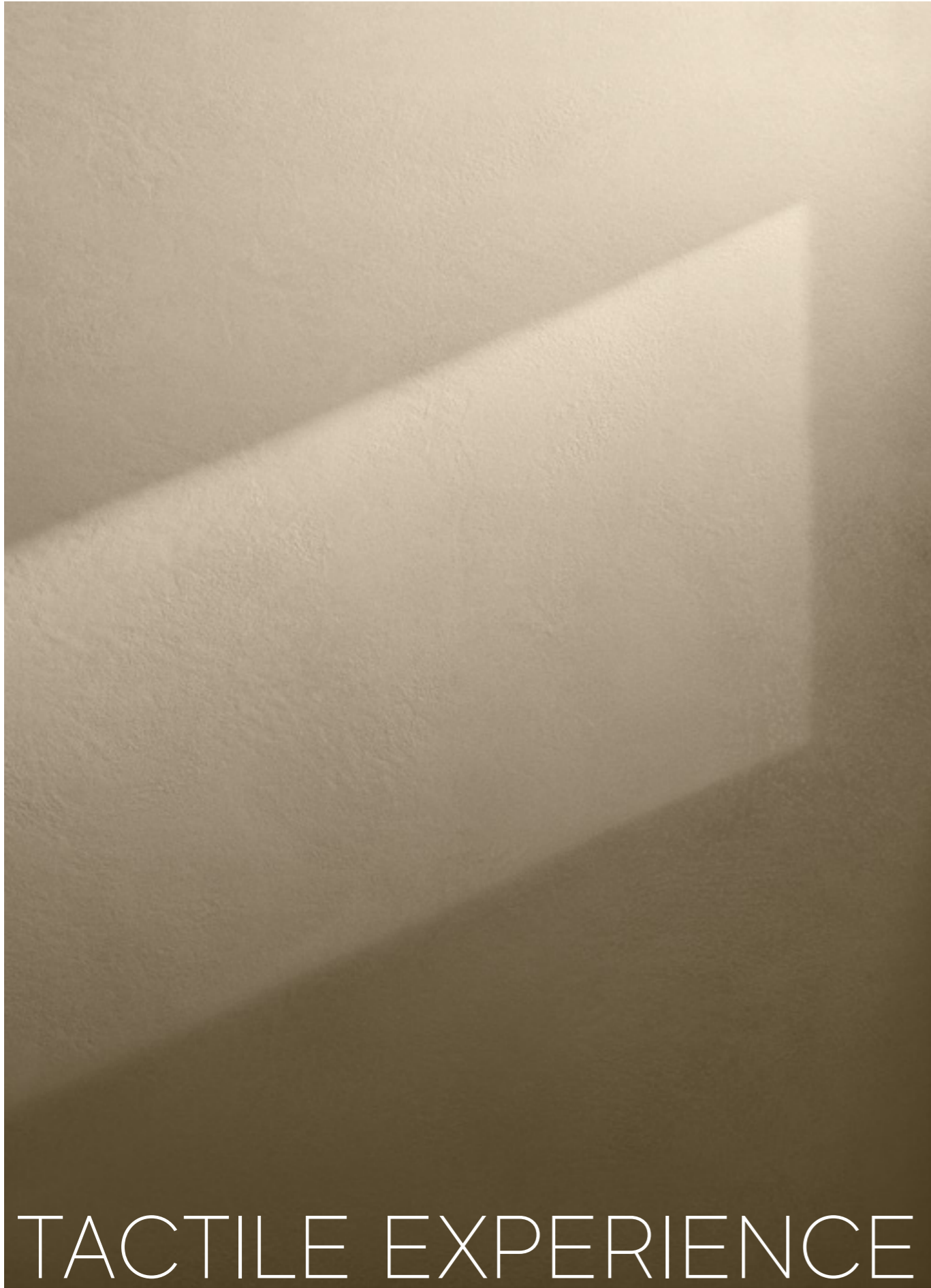
SURFACE
RANGE &
TECHNICAL
SPECS



ENJOY
THE VIDEO



MATERIC DREAM



TACTILE EXPERIENCE

INDEX



INSPIRATION



THE COLLECTION



SURFACE
RANGE &
TECHNICAL
SPECS



ENJOY
THE VIDEO



INDEX



INSPIRATION



THE COLLECTION



SURFACE
RANGE &
TECHNICAL
SPECS



ENJOY
THE VIDEO




AN IMAGINARY DIALOGUE



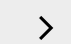
THE ART OF RELIEFS




INDEX 

INSPIRATION 

THE COLLECTION 

SURFACE RANGE & TECHNICAL SPECS 

ENJOY THE VIDEO 

INDEX



INSPIRATION



THE COLLECTION



SURFACE
RANGE &
TECHNICAL
SPECS



ENJOY
THE VIDEO



TIMELESS COLORS

Lo Studio di Elisa Ossino, architetto e interior designer di origini siciliane, è un punto avanzato di quella ricerca creativa che unisce l'attenzione per la naturalità dei materiali, l'artigianalità delle lavorazioni e un segno modernista ispirato alla tensione verso la semplicità formale. Le atmosfere metafisiche, i rimandi surrealisti, la matrice meditativa di una potente astrazione geometrica, le palette modulate come un trattato di teoria dei colori, rendono ogni lavoro e collaborazione un episodio che ridefinisce la relazione tra spazio, luci e oggetti.

Elisa Ossino e Atlas Concorde condividono la forte passione per la ricerca sul prodotto e la sua matericità. La loro collaborazione nasce proprio dallo studio e dalla sperimentazione sulla materia, dall'attenzione formale che consente di segnare ogni produzione con un tratto inconfondibile. Elisa Ossino ha disegnato per Atlas Concorde Boost Expression, una collezione che enfatizza le variazioni tonali e le qualità materiche delle superfici, conferendo a ciascuna texture un aspetto che rimanda a suggestioni formali sempre differenti.

Il pattern di ciascun pezzo diventa così una narrazione di luce e tatto, che scorre sulla texture a rilievo, individuando motivi geometrici, andamenti dinamici, trapassi chiaroscurali, ora sottili ora più marcati, tratti modernisti, richiami Op Art, con una straordinaria capacità di trascendere l'intenzione decorativa e rendere la materia idea, invenzione, linguaggio.

The Studio of Elisa Ossino, a Sicilian-born architect and interior designer, is an advanced point of that creative research that combines attention to the naturalness of materials, the craftsmanship of workmanship and a modernist sign inspired by the tension toward formal simplicity. The metaphysical atmospheres, the surrealist references, the meditative matrix of powerful geometric abstraction, the palettes modulated like a treatise on color theory, make each work and collaboration an episode that redefines the relationship between space, light and objects.

Elisa Ossino and Atlas Concorde share a strong passion for product research and materiality. Their collaboration stems precisely from the study and experimentation on the material, from the formal attention that allows them to mark each production with an unmistakable trait. Elisa Ossino has designed for Atlas Concorde Boost Expression, a collection that emphasizes tonal variations and the material and decorative qualities of surfaces, giving each texture an appearance that refers to ever changing formal suggestions.

The pattern of each piece thus becomes a narrative of light and touch, flowing over the relief texture, identifying geometric motifs, dynamic trends, chiaroscuro transitions, now subtle now more pronounced, modernist traits, Op Art references, with an extraordinary ability to transcend the decorative intention and render the material idea, invention, language.

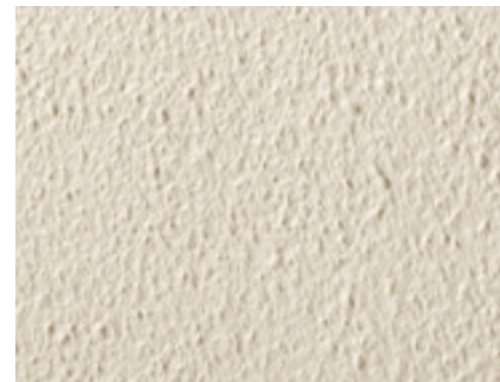
MATERIC EXPRESSION



Ph. Jessica Soffiati



Elisa Ossino



INDEX



INSPIRATION



THE COLLECTION



SURFACE RANGE & TECHNICAL SPECS



ENJOY THE VIDEO



The Collection

↔ Villa In&Out



↔ Luxury Store



↔ Living



↔ Hotel Suite



↔ Hotel Restaurant



↔ Penthouse



↔ Home Bathroom



THE COLLECTION

- VILLA IN&OUT
- LUXURY STORE
- LIVING
- HOTEL SUITE
- HOTEL RESTAURANT
- PENTHOUSE
- HOME BATHROOM

SURFACE RANGE & TECHNICAL SPECS

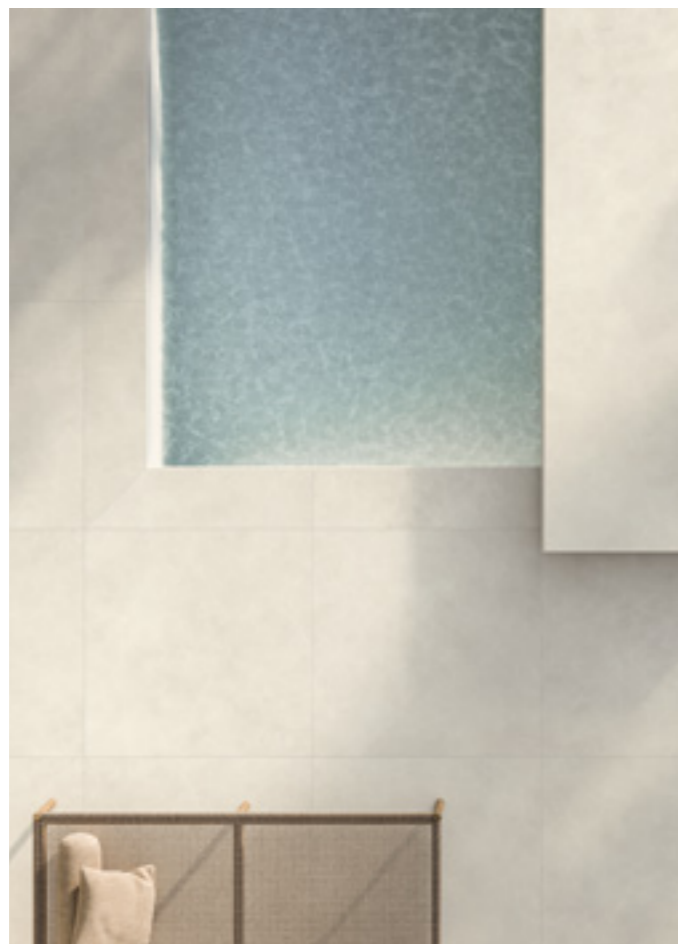
ENJOY THE VIDEO


OUTDOOR FLOOR
Boost Expression
Ice
Outdoor Sensitech \pm 20mm
120x120 cm | 47¹/₄"x47¹/₄"

Elemento L
Ice
Outdoor Sensitech \pm 20mm
33x120 cm | 13"x47¹/₄"

OUTDOOR WALL
Boost Expression
Ice
Matte
120x278 cm | 47¹/₄"x109¹/₂"

Haze
Matte
120x278 cm | 47¹/₄"x109¹/₂"




INDEX 

INSPIRATION 

THE COLLECTION 

- VILLA IN&OUT
- LUXURY STORE
- LIVING
- HOTEL SUITE
- HOTEL RESTAURANT
- PENTHOUSE
- HOME BATHROOM

SURFACE RANGE & TECHNICAL SPECS 

ENJOY THE VIDEO 

VILLA IN&OUT

INDEX



INSPIRATION



THE COLLECTION



- VILLA IN&OUT
- LUXURY STORE
- LIVING
- HOTEL SUITE
- HOTEL RESTAURANT
- PENTHOUSE
- HOME BATHROOM

SURFACE RANGE & TECHNICAL SPECS



ENJOY THE VIDEO

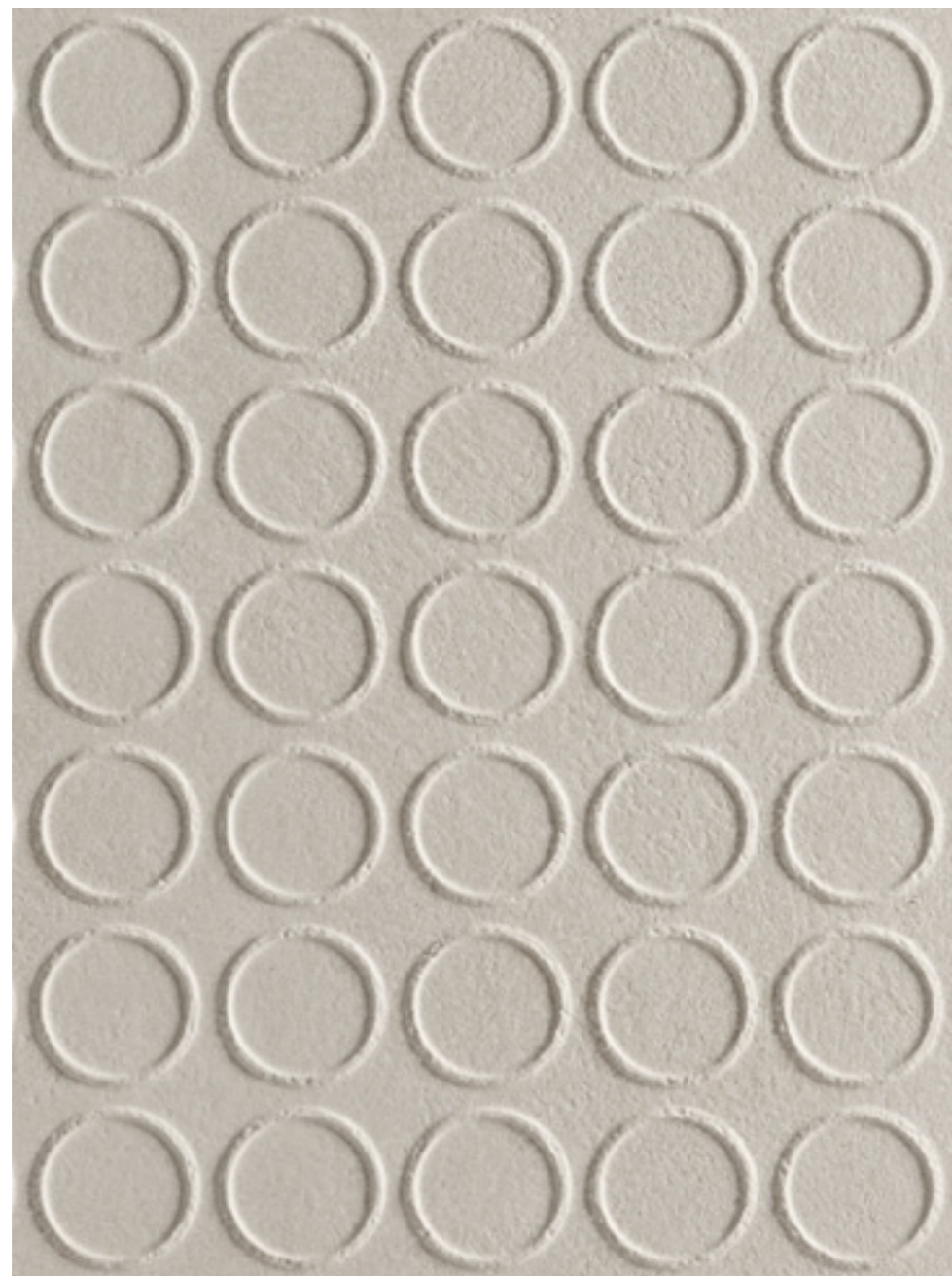


FLOOR
 Boost Expression
 Ice
 Matte Sensitech
 120x120 cm | 47¹/₄"x47¹/₄"

WALL
 Boost Expression
 3D Loop Ice
 Matte
 50x120 cm | 19⁵/₈"x47¹/₄"

OUTDOOR FLOOR
 Boost Expression
 Ice
 Outdoor Sensitech \pm 20mm
 120x120 cm | 47¹/₄"x47¹/₄"

OUTDOOR WALL
 Boost Expression
 Ice
 Matte
 120x278 cm | 47¹/₄"x109¹/₂"



FLOOR
**Boost Expression
Ice**
Matte Sensitech
120x120 cm | 47 1/4" x 47 1/4"

WALL
**Boost Expression
3D Loop Ice**
Matte
50x120 cm | 19 5/8" x 47 1/4"



INDEX



INSPIRATION



THE COLLECTION



- VILLA IN&OUT
- LUXURY STORE
- LIVING
- HOTEL SUITE
- HOTEL RESTAURANT
- PENTHOUSE
- HOME BATHROOM

SURFACE
RANGE &
TECHNICAL
SPECS



ENJOY
THE VIDEO





INDOOR FLOOR
Boost Expression
Ice
 Matte Sensitech
 120x120 cm | 47¹/₄"x47¹/₄"

INDOOR WALL
Boost Expression
Ice
 Matte
 120x278 cm | 47¹/₄"x109¹/₂"

OUTDOOR FLOOR
Boost Expression
Ice
 Outdoor Sensitech ± 20mm
 120x120 cm | 47¹/₄"x47¹/₄"

Elemento L
Ice
 Outdoor Sensitech ± 20mm
 33x120 cm | 13"x47¹/₄"

OUTDOOR WALL
Boost Expression
Ice
 Matte
 120x278 cm | 47¹/₄"x109¹/₂"



INDEX



INSPIRATION



THE COLLECTION



- VILLA IN&OUT
- LUXURY STORE
- LIVING
- HOTEL SUITE
- HOTEL RESTAURANT
- PENTHOUSE
- HOME BATHROOM

SURFACE
 RANGE &
 TECHNICAL
 SPECS



ENJOY
 THE VIDEO

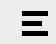




FLOOR
**Boost Expression
Ice**
Matte Sensitech
120x120 cm | 47¹/₄"x47¹/₄"

WALL
**Boost Expression
Grain Glow**
Matte
50x120 cm | 19⁵/₈"x47¹/₄"




INDEX 

INSPIRATION 

THE COLLECTION 

- VILLA IN&OUT
- LUXURY STORE
- LIVING
- HOTEL SUITE
- HOTEL RESTAURANT
- PENTHOUSE
- HOME BATHROOM

SURFACE
RANGE &
TECHNICAL
SPECS 

ENJOY
THE VIDEO 

INDEX



INSPIRATION



THE COLLECTION

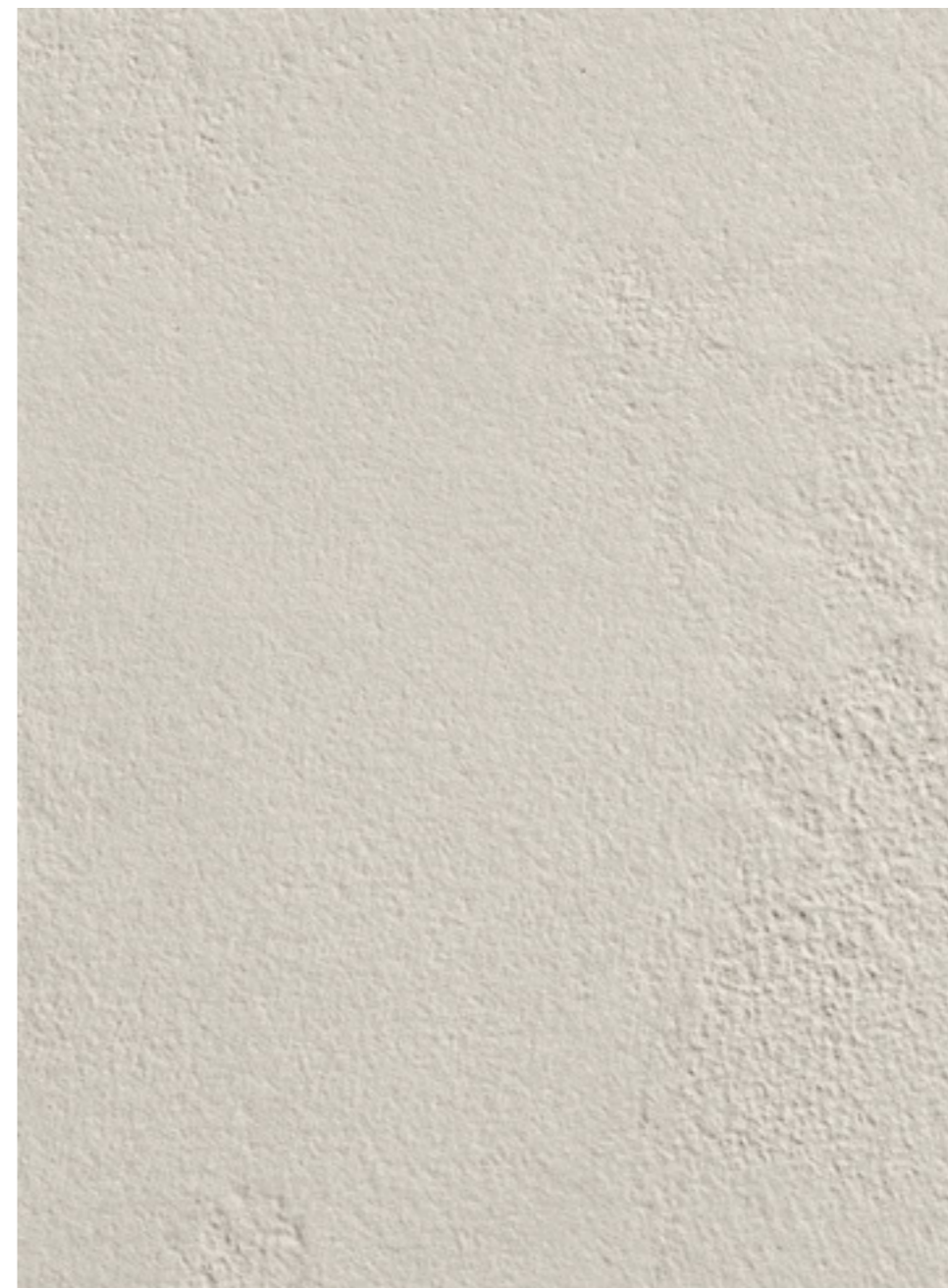


VILLA IN&OUT
LUXURY STORE
LIVING
HOTEL SUITE
HOTEL RESTAURANT
PENTHOUSE
HOME BATHROOM

SURFACE
RANGE &
TECHNICAL
SPECS



ENJOY
THE VIDEO



FLOOR
**Boost Expression
Ice**
Matte Sensitech
120x120 cm | 47¹/₄"x47¹/₄"

WALL
**Boost Expression
Grain Glow**
Matte
50x120 cm | 19⁵/₈"x47¹/₄"

**Boost Expression
3D Loop Ice**
Matte
50x120 cm | 19⁵/₈"x47¹/₄"

INDEX



INSPIRATION



THE COLLECTION



- VILLA IN&OUT
- LUXURY STORE
- LIVING
- HOTEL SUITE
- HOTEL RESTAURANT
- PENTHOUSE
- HOME BATHROOM

SURFACE RANGE & TECHNICAL SPECS



ENJOY THE VIDEO



FLOOR
Boost Expression
Tan
 Matte Sensitech
 120x120 cm | 47¹/₄"x47¹/₄"

WALL
Boost Expression
3D Flute Glow
 Matte
 50x120 cm | 19⁵/₈"x47¹/₄"

Boost Expression
Sienna
 Matte
 50x120 cm | 19⁵/₈"x47¹/₄"

FURNITURE
Boost Expression
Camel
 Matte
 120x278 cm | 47¹/₄"x109¹/₂"



LUXURY STORE

INDEX



INSPIRATION



THE COLLECTION



- VILLA IN&OUT
- LUXURY STORE
- LIVING
- HOTEL SUITE
- HOTEL RESTAURANT
- PENTHOUSE
- HOME BATHROOM

SURFACE RANGE & TECHNICAL SPECS



ENJOY THE VIDEO



FLOOR
 Boost Expression
 Tan
 Matte Sensitech
 120x120 cm | 47⁵/₄"x47¹/₄"

WALL
 Boost Expression
 3D Flute Glow
 Matte
 50x120 cm | 19⁵/₈"x47¹/₄"

Boost Expression
 Sienna
 Matte
 50x120 cm | 19⁵/₈"x47¹/₄"

FURNITURE
 Boost Expression
 Camel
 Matte
 120x278 cm | 47¹/₄"x109¹/₂"



FLOOR
**Boost Expression
 Tan**
 Matte Sensitech
 120x120 cm | 47¹/₄"x47¹/₄"

WALL
**Boost Expression
 3D Flute Glow**
 Matte
 50x120 cm | 19⁵/₈"x47¹/₄"

**Boost Expression
 Glow**
 Matte
 120x278 cm | 47¹/₄"x109¹/₂"

INDEX



INSPIRATION



THE COLLECTION



- VILLA IN&OUT
- LUXURY STORE
- LIVING
- HOTEL SUITE
- HOTEL RESTAURANT
- PENTHOUSE
- HOME BATHROOM

SURFACE
RANGE &
TECHNICAL
SPECS



ENJOY
THE VIDEO



FLOOR
Boost Expression
Shell
Matte Sensitech
120x120 cm | 47¹/₄"x47¹/₄"

WALL
Boost Expression
Mosaico Ellipse Glow
Matte Sensitech
37x37,8 cm | 14³/₅"x14⁷/₈"



INDEX



INSPIRATION



THE COLLECTION



VILLA IN&OUT
LUXURY STORE

LIVING

HOTEL SUITE
HOTEL RESTAURANT
PENTHOUSE
HOME BATHROOM

SURFACE
RANGE &
TECHNICAL
SPECS



ENJOY
THE VIDEO



LIVING

FLOOR
Boost Expression
Shell
Matte Sensitech
120x120 cm | 47¹/₄"x47¹/₄"

WALL
Boost Expression
Shell
Matte
120x278 cm | 47¹/₄"x109¹/₂"

INDEX



INSPIRATION



THE COLLECTION



VILLA IN&OUT
LUXURY STORE
LIVING

HOTEL SUITE
HOTEL RESTAURANT
PENTHOUSE
HOME BATHROOM

SURFACE
RANGE &
TECHNICAL
SPECS



ENJOY
THE VIDEO





FLOOR
Boost Expression
Shell
Matte Sensitech
120x120 cm | 47¹/₄"x47¹/₄"

WALL
Boost Expression
Shell
Matte
120x278 cm | 47¹/₄"x109¹/₂"



INDEX



INSPIRATION



THE COLLECTION



VILLA IN&OUT
LUXURY STORE

LIVING
HOTEL SUITE
HOTEL RESTAURANT
PENTHOUSE
HOME BATHROOM

SURFACE
RANGE &
TECHNICAL
SPECS



ENJOY
THE VIDEO



FLOOR
**Boost Expression
Camel**
Matte Sensitech
120x120 cm | 47¹/₄"x47¹/₄"



HOTEL SUITE

WALL
**Boost Expression
Shell**
Matte
120x278 cm | 47¹/₄"x109¹/₂"

**Boost Expression
Grain Glow**
Matte
50x120 cm | 19⁵/₈"x47¹/₄"

**Boost Expression
3D Flute Shell**
Matte
50x120 cm | 19⁵/₈"x47¹/₄"



INDEX



INSPIRATION



THE COLLECTION



- VILLA IN&OUT
- LUXURY STORE
- LIVING
- HOTEL SUITE
- HOTEL RESTAURANT
- PENTHOUSE
- HOME BATHROOM

SURFACE
RANGE &
TECHNICAL
SPECS



ENJOY
THE VIDEO



INDEX



INSPIRATION



THE COLLECTION



VILLA IN&OUT
LUXURY STORE
LIVING

HOTEL SUITE
HOTEL RESTAURANT
PENTHOUSE
HOME BATHROOM

SURFACE
RANGE &
TECHNICAL
SPECS



ENJOY
THE VIDEO



FLOOR
Boost Expression
Camel
Matte Sensitech
120x120 cm | 47¹/₄"x47¹/₄"

WALL
Boost Expression
3D Flute Shell
Matte
50x120 cm | 19⁵/₈"x47¹/₄"

Boost Expression
Shell
Matte
120x278 cm | 47¹/₄"x109¹/₂"

Boost Expression
Grain Glow
Matte
50x120 cm | 19⁵/₈"x47¹/₄"

BEDHEAD
Atlas Plan Boost Icor
Dune
Hammered
162x324 cm | 63³/₄"x127¹/₂"

FURNITURE
Boost Expression
Grain Glow
50x120 cm | 19⁵/₈"x47¹/₄"

Boost Expression
Shell
120x278 cm | 47¹/₄"x109¹/₂"



WALL
Boost Expression
3D Flute Shell
 Matte
 50x120 cm | 19⁵/₈"x47¹/₄"

FURNITURE
Boost Expression
Grain Glow
 Matte
 50x120 cm | 19⁵/₈"x47¹/₄"

WALL
Boost Expression
Shell
 Matte
 120x278 cm | 47¹/₄"x109¹/₂"

Boost Expression
Grain Glow
 Matte
 50x120 cm | 19⁵/₈"x47¹/₄"



INDEX



INSPIRATION



THE COLLECTION



- VILLA IN&OUT
- LUXURY STORE
- LIVING
- HOTEL SUITE
- HOTEL RESTAURANT
- PENTHOUSE
- HOME BATHROOM

SURFACE
 RANGE &
 TECHNICAL
 SPECS



ENJOY
 THE VIDEO





WALL
**Boost Expression
Grain Shell**
Matte
50x120 cm | 19⁵/₈"x47¹/₄"

**Boost Expression
Shell**
Matte
120x278 cm | 47¹/₄"x109¹/₂"

**Boost Expression
3D Flute Shell**
Matte
50x120 cm | 19⁵/₈"x47¹/₄"

FLOOR
**Boost Expression
Camel**
Matte Sensitech
120x120 cm | 47¹/₄"x47¹/₄"



SINK | EVOLUZIONE - DUO
Atlas Concorde Habitat
**Boost Expression Shell Matte
Rectangular Basin White**
180x45x12 cm | 70⁷/₈"x17³/₄"x4³/₄"

SHELF | ESSENZA - THIN
Atlas Concorde Habitat
Boost Expression Shell Matte
180x35x5 cm | 70⁷/₈"x13³/₄"x2

INDEX



INSPIRATION



THE COLLECTION



VILLA IN&OUT
LUXURY STORE
LIVING
HOTEL SUITE
HOTEL RESTAURANT
PENTHOUSE
HOME BATHROOM

SURFACE
RANGE &
TECHNICAL
SPECS



ENJOY
THE VIDEO





FLOOR
Boost Expression
Camel
 Matte Sensitech
 120x120 cm | 47¹/₄"x47¹/₄"

WALL
Boost Expression
Grain Shell
 Matte
 50x120 cm | 19⁵/₈"x47¹/₄"

FURNITURE
Boost Expression
Shell
 Matte
 120x278 cm | 47¹/₄"x109¹/₂"

INDEX



INSPIRATION



THE COLLECTION



VILLA IN&OUT
 LUXURY STORE
 LIVING
 HOTEL SUITE
 HOTEL RESTAURANT
 PENTHOUSE
 HOME BATHROOM

SURFACE
 RANGE &
 TECHNICAL
 SPECS



ENJOY
 THE VIDEO



FLOOR
Boost Expression
Haze
Matte Sensitech
120x120 cm | 47 1/4"x47 1/4"

WALL
Boost Expression
Duo Haze
Matte
120x278 cm | 47 1/4"x109 1/2"

Boost Expression
Ice
Matte
120x278 cm | 47 1/4"x109 1/2"



INDEX



INSPIRATION



THE COLLECTION



- VILLA IN&OUT
- LUXURY STORE
- LIVING
- HOTEL SUITE
- HOTEL RESTAURANT
- PENTHOUSE
- HOME BATHROOM

SURFACE
RANGE &
TECHNICAL
SPECS



ENJOY
THE VIDEO



HOTEL RESTAURANT

INDEX



INSPIRATION



THE COLLECTION



- VILLA IN&OUT
- LUXURY STORE
- LIVING
- HOTEL SUITE
- HOTEL RESTAURANT
- PENTHOUSE
- HOME BATHROOM

SURFACE RANGE & TECHNICAL SPECS



ENJOY THE VIDEO



FLOOR Boost Expression Haze Matte Sensitech 120x120 cm 47 ¹ / ₄ "x47 ¹ / ₄ "	WALL Boost Expression Duo Haze Matte 120x278 cm 47 ¹ / ₄ "x109 ¹ / ₂ "	Boost Expression Ice Matte 120x278 cm 47 ¹ / ₄ "x109 ¹ / ₂ "
---	---	--

INDEX



INSPIRATION



THE COLLECTION



- VILLA IN&OUT
- LUXURY STORE
- LIVING
- HOTEL SUITE
- HOTEL RESTAURANT
- PENTHOUSE
- HOME BATHROOM

SURFACE
RANGE &
TECHNICAL
SPECS



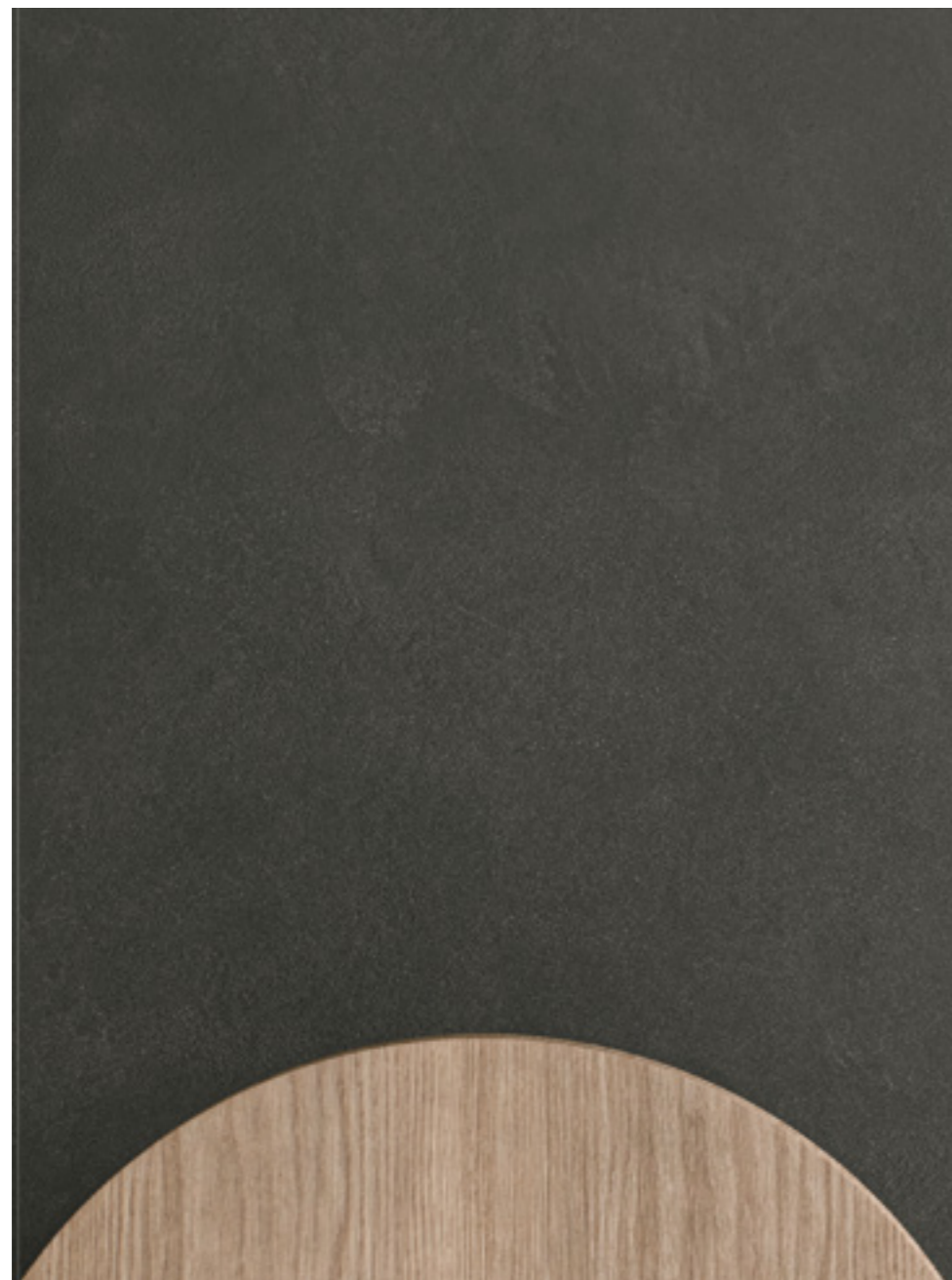
ENJOY
THE VIDEO



FLOOR
**Boost Expression
Haze**
Matte Sensitech
120x120 cm | 47¹/₄"x47¹/₄"

WALL
**Boost Expression
Duo Haze**
Matte
120x278 cm | 47¹/₄"x109¹/₂"

**Boost Expression
Ice**
Matte
120x278 cm | 47¹/₄"x109¹/₂"

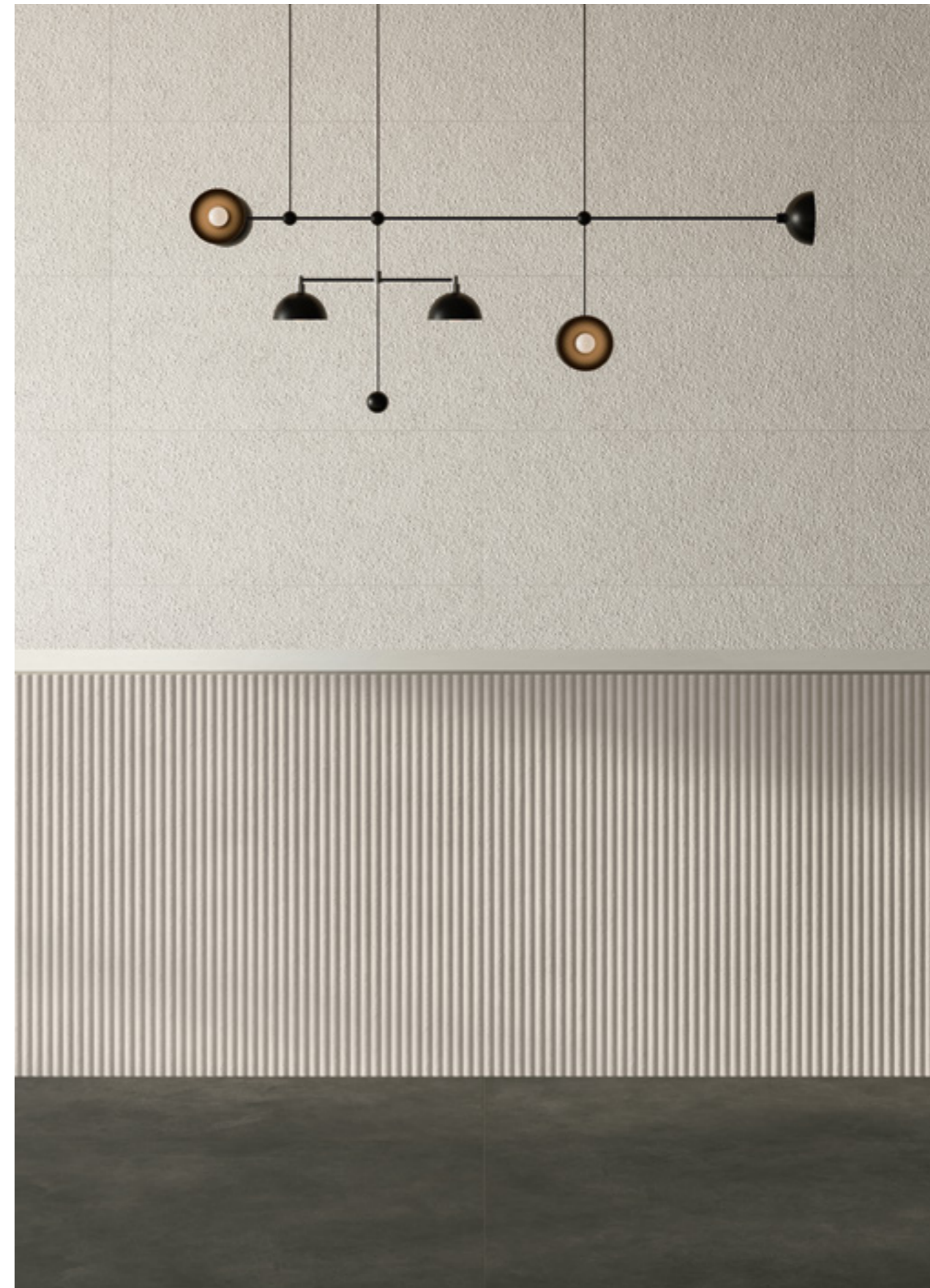


FLOOR
Boost Expression
Carbon
 Matte Sensitech
 120x120 cm | 47¹/₄"x47¹/₄"

WALL
Boost Expression
Grain Glow
 Matte
 50x120 cm | 19⁵/₈"x47¹/₄"

COUNTER
Boost Expression
3D Flute Ice
 Matte
 50x120 cm | 19⁵/₈"x47¹/₄"

Boost Expression
Ice
 Matte
 120x278 cm | 47¹/₄"x109¹/₂"



INDEX



INSPIRATION



THE COLLECTION



- VILLA IN&OUT
- LUXURY STORE
- LIVING
- HOTEL SUITE
- HOTEL RESTAURANT
- PENTHOUSE
- HOME BATHROOM

SURFACE
 RANGE &
 TECHNICAL
 SPECS



ENJOY
 THE VIDEO





OUTDOOR FLOOR
Boost Expression
Haze
 Outdoor Sensitech \pm 20mm
 120x120 cm | 47 $\frac{1}{4}$ "x47 $\frac{1}{4}$ "

OUTDOOR WALL
Boost Expression
Haze
 Matte
 120x278 cm | 47 $\frac{1}{4}$ "x109 $\frac{1}{2}$ "

OUTDOOR COUNTER
Boost Expression
Haze
 Matte
 120x278 cm | 47 $\frac{1}{4}$ "x109 $\frac{1}{2}$ "



PENTHOUSE

INDEX



INSPIRATION



THE COLLECTION



- VILLA IN&OUT
- LUXURY STORE
- LIVING
- HOTEL SUITE
- HOTEL RESTAURANT
- PENTHOUSE
- HOME BATHROOM

SURFACE
 RANGE &
 TECHNICAL
 SPECS



ENJOY
 THE VIDEO



INDEX



INSPIRATION



THE COLLECTION



- VILLA IN&OUT
- LUXURY STORE
- LIVING
- HOTEL SUITE
- HOTEL RESTAURANT
- PENTHOUSE
- HOME BATHROOM

SURFACE RANGE & TECHNICAL SPECS



ENJOY THE VIDEO



FLOOR
 Boost Expression
 Haze
 Outdoor Sensitech \pm 20mm
 120x120 cm | 47¹/₄"x47¹/₄"

WALL
 Boost Expression
 Haze
 Matte
 120x278 cm | 47¹/₄"x109¹/₂"

OUTDOOR COUNTER
 Boost Expression
 Haze
 Matte
 120x278 cm | 47¹/₄"x109¹/₂"



FLOOR
Boost Expression
Haze
 Matte Sensitech
 120x120 cm | 47¹/₄"x47¹/₄"

WALL
Boost Expression
Mosaico Circle Carbon
 Matte Sensitech
 32x32 cm | 12³/₅"x12³/₅"

Boost Expression
Haze
 Matte
 120x278 cm | 47¹/₄"x109¹/₂"

COUNTERTOP
Atlas Plan
Boost Mineral Grey
 162x324 cm | 63³/₄"x127¹/₂"

FURNITURE
Atlas Plan
Boost Mineral Grey
 162x324 cm | 63³/₄"x127¹/₂"

INDEX



INSPIRATION



THE COLLECTION



- VILLA IN&OUT
- LUXURY STORE
- LIVING
- HOTEL SUITE
- HOTEL RESTAURANT
- PENTHOUSE
- HOME BATHROOM

SURFACE RANGE & TECHNICAL SPECS



ENJOY THE VIDEO





INDEX



INSPIRATION



THE COLLECTION >

- VILLA IN&OUT
- LUXURY STORE
- LIVING
- HOTEL SUITE
- HOTEL RESTAURANT
- PENTHOUSE
- HOME BATHROOM

SURFACE RANGE & TECHNICAL SPECS



ENJOY THE VIDEO



WALL
Boost Expression
Mosaico Ellipse Ice
 Matte Sensitech
 32x32 cm | 14³/₅"x14⁷/₈"

SHELF
Boost Expression
Ice
 Matte
 120x278 cm | 47¹/₄"x109¹/₂"

FLOOR
Boost Expression
Haze
 Matte Sensitech
 120x120 cm | 47¹/₄"x47¹/₄"

INDEX



INSPIRATION



THE COLLECTION



- VILLA IN&OUT
- LUXURY STORE
- LIVING
- HOTEL SUITE
- HOTEL RESTAURANT
- PENTHOUSE
- HOME BATHROOM

SURFACE RANGE & TECHNICAL SPECS



ENJOY THE VIDEO



FLOOR
 Boost Expression
 Haze
 Matte Sensitech
 120x120 cm | 47¹/₄"x47¹/₄"

WALL
 Boost Expression
 Mosaico Circle Carbon
 Matte Sensitech
 32x32 cm | 12³/₅"x12²/₅"

COUNTERTOP
 Atlas Plan
 Boost Mineral Grey
 162x324 cm | 63³/₄"x127¹/₂"

FURNITURE
 Atlas Plan
 Boost Mineral Grey
 162x324 cm | 63³/₄"x127¹/₂"



WALL
Boost Expression
Mosaico Circle Camel
Matte Sensitech
32x32 cm | 12³/₅"x12³/₅"

Boost Expression
Mosaico Circle Carbon
Matte Sensitech
32x32 cm | 12³/₅"x12³/₅"

COUNTERTOP
Atlas Plan
Boost Mineral Grey
162x324 cm | 63³/₄"x127¹/₂"

INDEX



INSPIRATION



THE COLLECTION



- VILLA IN&OUT
- LUXURY STORE
- LIVING
- HOTEL SUITE
- HOTEL RESTAURANT
- PENTHOUSE
- HOME BATHROOM

SURFACE
RANGE &
TECHNICAL
SPECS



ENJOY
THE VIDEO



INDEX



INSPIRATION



THE COLLECTION



- VILLA IN&OUT
- LUXURY STORE
- LIVING
- HOTEL SUITE
- HOTEL RESTAURANT
- PENTHOUSE
- HOME BATHROOM

SURFACE RANGE & TECHNICAL SPECS



ENJOY THE VIDEO



FLOOR
Boost Expression Ice
 Matte Sensitech
 120x120 cm | 47¹/₄"x47¹/₄"

WALL
Boost Expression Life Olive
 Designed by Atlas Concorde
 Matte
 50x120 cm | 19⁵/₈"x47¹/₄"

Boost Expression Ice
 Matte
 120x278 cm | 47¹/₄"x109¹/₂"

Boost Expression Olive
 Matte
 50x120 cm | 19⁵/₈"x47¹/₄"



HOME BATHROOM



FLOOR
Boost Expression
Ice
 Matte Sensitech
 120x120 cm | 47¹/₄"x47¹/₄"

WALL
Boost Expression
Olive
 Matte
 50x120 cm | 19⁵/₈"x47¹/₄"

Boost Expression
Ice
 Matte
 120x278 cm | 47¹/₄"x109¹/₂"

SINK | ESSENZA - UP
Atlas Concorde Habitat
Boost Expression Ice Matte
 65x50x15 cm | 25⁵/₈"x 19⁵/₈"x5⁷/₈"

TOP | ESSENZA - LEVEL
Atlas Concorde Habitat
Boost Expression Ice Matte
 240x50x15 cm | 94¹/₂"x 19⁵/₈"x5⁷/₈"

SHELF | ESSENZA - THIN
Atlas Concorde Habitat
Boost Expression Ice Matte
 240x35x5 cm | 94¹/₂"x15³/₄"x2"

INDEX



INSPIRATION



THE COLLECTION



- VILLA IN&OUT
- LUXURY STORE
- LIVING
- HOTEL SUITE
- HOTEL RESTAURANT
- PENTHOUSE
- HOME BATHROOM

SURFACE
 RANGE &
 TECHNICAL
 SPECS



ENJOY
 THE VIDEO





WALL
Boost Expression
Life Olive
Designed by Atlas Concorde
Matte
50x120 cm | 19⁵/₈"x47¹/₄"

Boost Expression
Olive
Matte
50x120 cm | 19⁵/₈"x47¹/₄"

INDEX



INSPIRATION



THE COLLECTION



VILLA IN&OUT
LUXURY STORE
LIVING
HOTEL SUITE
HOTEL RESTAURANT
PENTHOUSE
HOME BATHROOM

SURFACE
RANGE &
TECHNICAL
SPECS



CREDITS

Art Direction and Interiors
Elisa Ossino Studio

Photo
Valentina Sommariva

Courtesy Yasuhisa Kohyama
and Fondazione Officine Saffi

Technical Expertise
HD Surface

ENJOY
THE VIDEO



INDEX



SURFACE RANGE & TECHNICAL SPECIFICATIONS

- ◇ BOOST EXPRESSION RANGE
- ◇ SENSITECH
- ◇ TECHNICAL SPECIFICATIONS

INSPIRATION



THE COLLECTION



SURFACE RANGE & TECHNICAL SPECS



BOOST EXPRESSION RANGE
SENSITECH
TECHNICAL SPECIFICATIONS

ENJOY THE VIDEO



Porcelain tiles

PORCELAIN TILES - Gres Porcellanato - Grès cérame - Feinsteinzeug - Gres porcelánico - Керамический гранит
RECTIFIED MONOCALIBER - Rettificato monocalibro - Rectifié mono-calibre - Geschliffen einkalibrig - Rectificado monocalibre - Ретифицированный в одном калибре

		Glow	Shell	Camel	Tan	Ice	Haze	Carbon
Floor								
Wall								
Bathroom furniture								
120x278 cm - 47 ¹ / ₄ "x109 ¹ / ₂ "	± 6 mm	Matte	Matte	Matte	Matte	Matte	Matte	
120x278 cm - 47 ¹ / ₄ "x109 ¹ / ₂ " Duo	± 6 mm			Matte ⁽¹⁾			Matte ⁽²⁾	
120x120 cm - 47 ¹ / ₄ "x47 ¹ / ₄ "	± 9 mm	Matte Sensitech	Matte Sensitech	Matte Sensitech	Matte Sensitech	Matte Sensitech	Matte Sensitech	Matte Sensitech
80x80 cm - 31 ¹ / ₂ "x31 ¹ / ₂ "	± 9 mm	Matte Sensitech	Matte Sensitech	Matte Sensitech	Matte Sensitech	Matte Sensitech	Matte Sensitech	Matte Sensitech
60x120 cm - 23 ⁵ / ₈ "x47 ¹ / ₄ "	± 9 mm	Matte Sensitech	Matte Sensitech	Matte Sensitech	Matte Sensitech	Matte Sensitech	Matte Sensitech	Matte Sensitech
60x60 cm - 23 ⁵ / ₈ "x23 ⁵ / ₈ "	± 9 mm	Matte Sensitech	Matte Sensitech	Matte Sensitech	Matte Sensitech	Matte Sensitech	Matte Sensitech	Matte Sensitech
30x60 cm - 11 ³ / ₄ "x23 ⁵ / ₈ "	± 9 mm	Matte Sensitech	Matte Sensitech	Matte Sensitech	Matte Sensitech	Matte Sensitech	Matte Sensitech	Matte Sensitech

Outdoor								
120x120 cm - 47 ¹ / ₄ "x47 ¹ / ₄ "	± 9 mm	Grip Sensitech	Grip Sensitech	Grip Sensitech	Grip Sensitech	Grip Sensitech	Grip Sensitech	
60x120 cm - 23 ⁵ / ₈ "x47 ¹ / ₄ "	± 9 mm	Grip Sensitech	Grip Sensitech	Grip Sensitech	Grip Sensitech	Grip Sensitech	Grip Sensitech	
120x120 cm - 47 ¹ / ₄ "x47 ¹ / ₄ "	± 20 mm		Outdoor Sensitech			Outdoor Sensitech	Outdoor Sensitech	
80x80 cm - 31 ¹ / ₂ "x31 ¹ / ₂ "	± 20 mm		Outdoor Sensitech			Outdoor Sensitech	Outdoor Sensitech	
60x120 cm - 23 ⁵ / ₈ "x47 ¹ / ₄ "	± 20 mm		Outdoor Sensitech			Outdoor Sensitech	Outdoor Sensitech	
60x60 cm - 23 ⁵ / ₈ "x23 ⁵ / ₈ "	± 20 mm		Outdoor Sensitech			Outdoor Sensitech	Outdoor Sensitech	

⁽¹⁾ Duo Camel presents a combination of colors from this collection - Camel and Glow. Duo Camel abbina i colori di collezione Camel e Glow.
⁽²⁾ Duo Haze presents a combination of colors from this collection - Haze and Ice. Duo Haze abbina i colori di collezione Haze e Ice.

Wall tiles

WALL TILES - Rivestimenti - Revêtements - Wandfliesen - Revestimientos - Настенная плитка
RECTIFIED MONOCALIBER - Rettificato monocalibro - Rectifié mono-calibre - Geschliffen einkalibrig - Rectificado monocalibre - Ретифицированный в одном калибре

		Glow	Shell	Ice	Sienna	Olive	Cyan
Wall							
50x120 cm - 19 ⁵ / ₈ "x47 ¹ / ₄ "	± 8,5 mm	Matte	Matte	Matte	Matte	Matte	Matte
50x120 cm - 19 ⁵ / ₈ "x47 ¹ / ₄ " Grain	± 10 mm	Matte	Matte				
50x120 cm - 19 ⁵ / ₈ "x47 ¹ / ₄ " 3D Flute	± 10 mm	Matte	Matte	Matte			
50x120 cm - 19 ⁵ / ₈ "x47 ¹ / ₄ " 3D Loop	± 10 mm	Matte	Matte	Matte			
50x120 cm - 19 ⁵ / ₈ "x47 ¹ / ₄ " Life	± 8,5 mm		Matte		Matte	Matte	

Sensitech pag.89

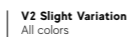
Destination of use



Anti-slip



Color-shading



GLOW

INDEX



SHELL

INSPIRATION



CAMEL

THE COLLECTION



TAN

ICE

SURFACE RANGE & TECHNICAL SPECS



BOOST EXPRESSION RANGE SENSITECH TECHNICAL SPECIFICATIONS

HAZE

CARBON

ENJOY THE VIDEO



3D Flute

Designed by **Elisa Ossino**

WALL TILES - Rivestimenti - Revêtements - Wandfliesen - Revestimientos - Настенная плитка
RECTIFIED MONOCALIBER - Rettificato monocalibro - Rectifié mono-calibre - Geschliffen einkalibrig - Rectificado monocalibre - Ретифицированный в одном калибре

V2 Slight Variation
All colors



50x120 cm
19⁵/₈"x47¹/₄"

± 10 mm



Boost Expression 3D Flute Ice
50x120 cm - 19⁵/₈"x47¹/₄"



Boost Expression 3D Flute Glow
50x120 cm - 19⁵/₈"x47¹/₄"



Boost Expression 3D Flute Shell
50x120 cm - 19⁵/₈"x47¹/₄"



3D Loop

Designed by **Elisa Ossino**

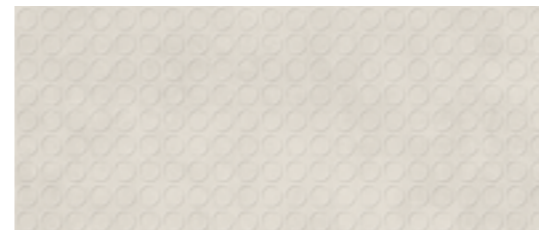
WALL TILES - Rivestimenti - Revêtements - Wandfliesen - Revestimientos - Настенная плитка
RECTIFIED MONOCALIBER - Rettificato monocalibro - Rectifié mono-calibre - Geschliffen einkalibrig - Rectificado monocalibre - Ретифицированный в одном калибре

V2 Slight Variation
All colors

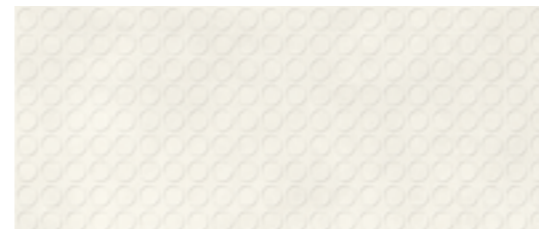


50x120 cm
19⁵/₈"x47¹/₄"

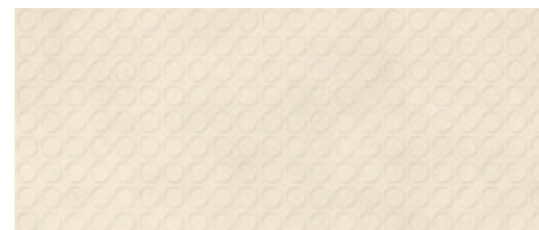
± 10 mm



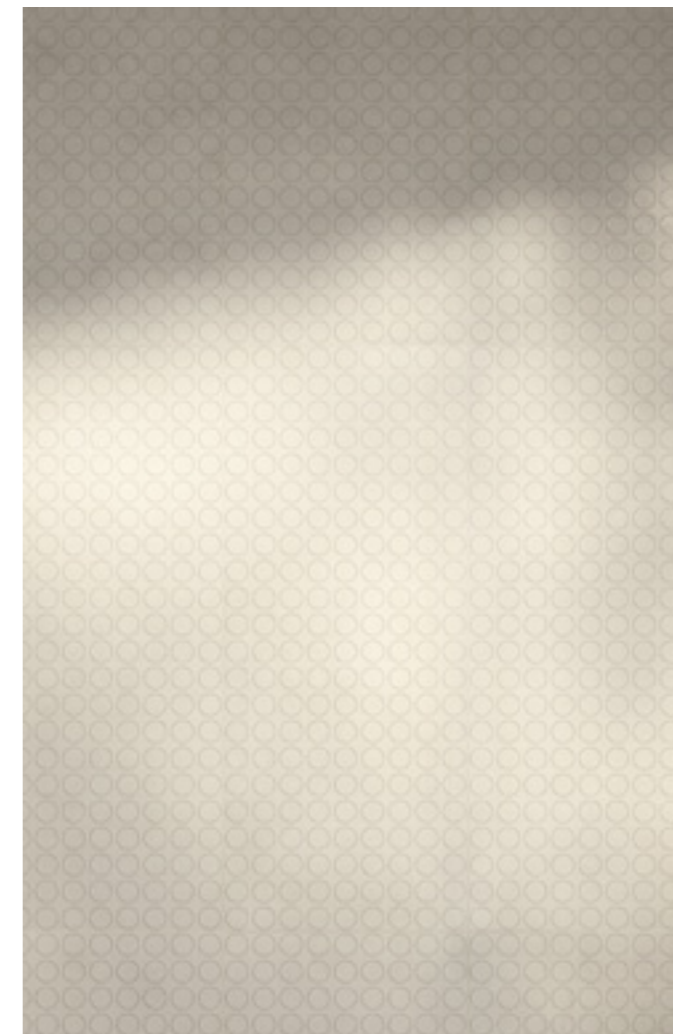
Boost Expression 3D Loop Ice
50x120 cm - 19⁵/₈"x47¹/₄"



Boost Expression 3D Loop Glow
50x120 cm - 19⁵/₈"x47¹/₄"



Boost Expression 3D Loop Shell
50x120 cm - 19⁵/₈"x47¹/₄"



INDEX



INSPIRATION



THE COLLECTION



SURFACE
RANGE &
TECHNICAL
SPECS



BOOST EXPRESSION RANGE
SENSITECH
TECHNICAL SPECIFICATIONS

ENJOY
THE VIDEO



Grain

Designed by **Elisa Ossino**

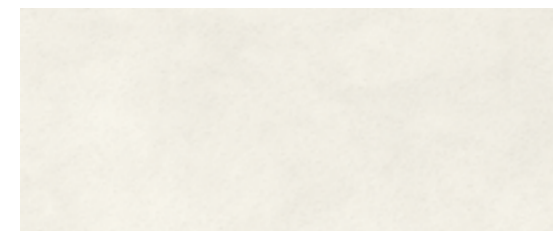
WALL TILES - Rivestimenti - Revêtements - Wandfliesen - Revestimientos - Настенная плитка
RECTIFIED MONOCALIBER - Rettificato monocalibro - Rectifié mono-calibre - Geschliffen einkalibrig - Rectificado monocalibre - Ретифицированный в одном калибре

V2 Slight Variation
All colors

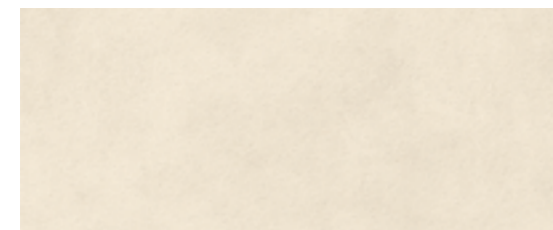


50x120 cm
19⁵/₈"x47¹/₄"

± 10 mm



Boost Expression Grain Glow
50x120 cm - 19⁵/₈"x47¹/₄"



Boost Expression Grain Shell
50x120 cm - 19⁵/₈"x47¹/₄"



Life

Designed by **Atlas Concorde**

WALL TILES - Rivestimenti - Revêtements - Wandfliesen - Revestimientos - Настенная плитка
RECTIFIED MONOCALIBER - Rettificato monocalibro - Rectifié mono-calibre - Geschliffen einkalibrig - Rectificado monocalibre - Ретифицированный в одном калибре

V2 Slight Variation
All colors



50x120 cm
19⁵/₈"x47¹/₄"

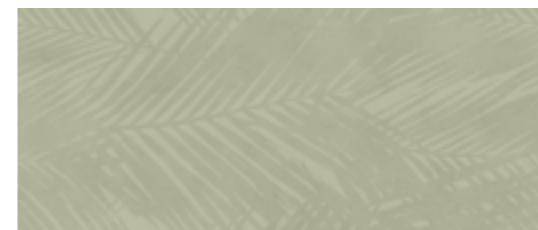
± 8,5 mm



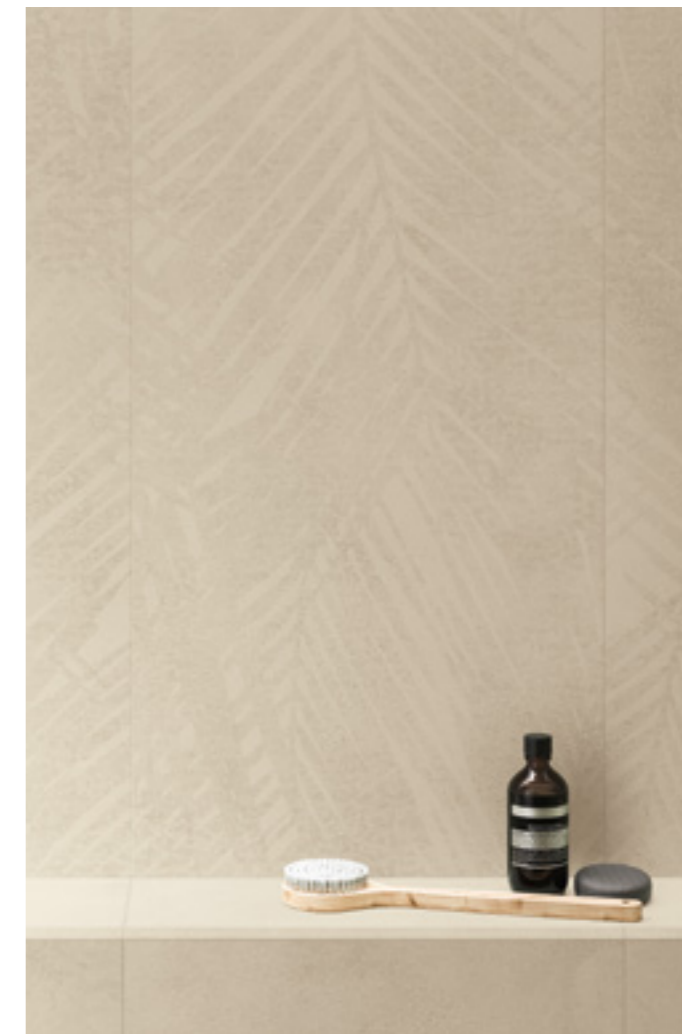
Boost Expression Life Shell
50x120 cm - 19⁵/₈"x47¹/₄"



Boost Expression Life Sienna
50x120 cm - 19⁵/₈"x47¹/₄"



Boost Expression Life Olive
50x120 cm - 19⁵/₈"x47¹/₄"



Duo

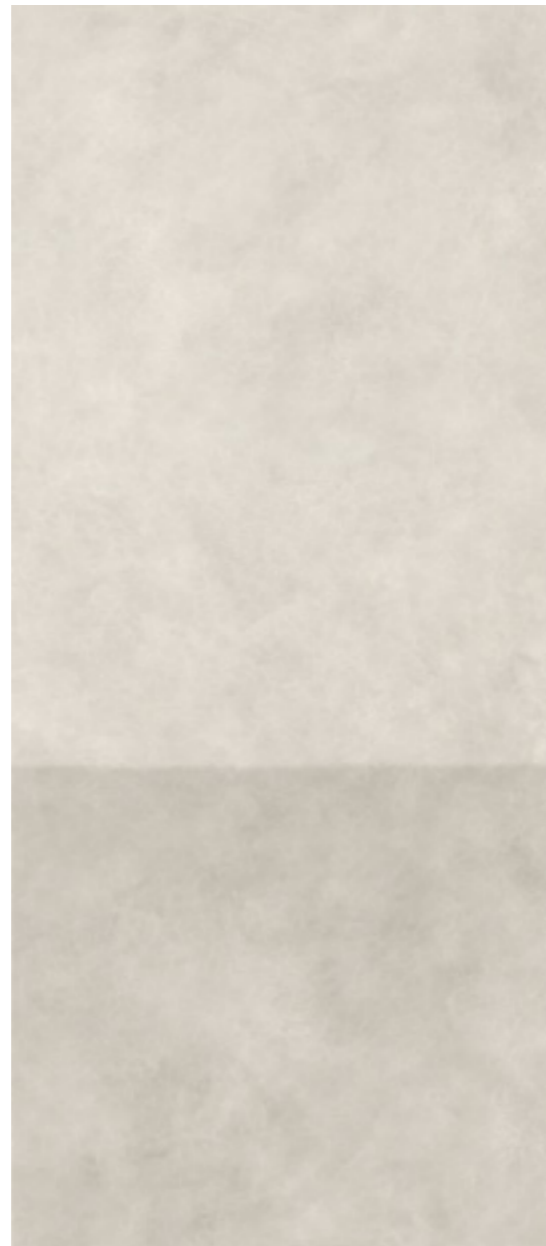
Designed by **Elisa Ossino**

PORCELAIN TILES - Gres Porcellanato - Grès cérame - Feinsteinzeug - Gres porcelánico - Керамический гранит
RECTIFIED MONOCALIBER - Rettificato monocalibro - Rectifié mono-calibre - Geschliffen einkalibrig - Rectificado monocalibre - Ретифицированный в одном калибре

V2 Slight Variation
 All colors



Boost Expression Duo Camel ⁽¹⁾
 120x278 cm - 47 1/4" x 109 1/2"



Boost Expression Duo Haze ⁽²⁾
 120x278 cm - 47 1/4" x 109 1/2"



120x278 cm
 47 1/4" x 109 1/2"

± 6 mm



⁽¹⁾ Duo Camel presents a combination of colors from this collection - Camel and Glow.
 Duo Camel abbina i colori di collezione Camel e Glow.

⁽²⁾ Duo Haze presents a combination of colors from this collection - Haze and Ice.
 Duo Haze abbina i colori di collezione Haze e Ice.



INDEX



INSPIRATION



THE COLLECTION



SURFACE RANGE & TECHNICAL SPECS



BOOST EXPRESSION RANGE
 SENSITECH
 TECHNICAL SPECIFICATIONS

ENJOY THE VIDEO



Mosaico Circle

Designed by **Elisa Ossino**

PORCELAIN TILES - Gres Porcellanato - Grès cérame - Feinsteinzeug - Gres porcelánico - Керамический гранит

V2 Slight Variation
All colors



Boost Expression Mosaico Circle Glow
Matte **Sensitech**
32x32 cm - 12³/₅"x12³/₅"



Boost Expression Mosaico Circle Shell
Matte **Sensitech**
32x32 cm - 12³/₅"x12³/₅"



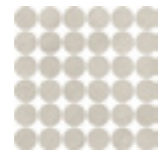
Boost Expression Mosaico Circle Camel
Matte **Sensitech**
32x32 cm - 12³/₅"x12³/₅"



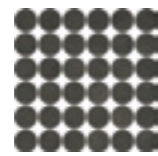
Boost Expression Mosaico Circle Tan
Matte **Sensitech**
32x32 cm - 12³/₅"x12³/₅"



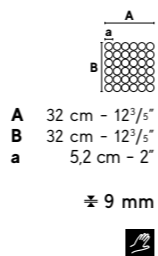
Boost Expression Mosaico Circle Ice
Matte **Sensitech**
32x32 cm - 12³/₅"x12³/₅"



Boost Expression Mosaico Circle Haze
Matte **Sensitech**
32x32 cm - 12³/₅"x12³/₅"



Boost Expression Mosaico Circle Carbon
Matte **Sensitech**
32x32 cm - 12³/₅"x12³/₅"



These mosaics allow you to customize a wall by choosing the grout color during the laying phase. The colors presented in these pages are mood suggestions and purely indicative. Questi mosaici permettono di personalizzare la parete attraverso la scelta del colore dello stucco durante la fase di posa. I colori presentati in queste pagine sono suggerimenti di mood e sono puramente indicativi. For the best performance of the mosaic, we recommend the use of epoxy mortars (class RG - EN 13888/ISO 13007) or decorative resins-cement, following the manufacturer's instructions. Al fine di ottenere una resa ottimale del mosaico, è consigliato l'utilizzo di malte epossidiche (classe RG - EN 13888/ISO 13007) o di resine cementizie attendendosi alle indicazioni di utilizzo fornite dal produttore.

V2 Slight Variation
All colors

Mosaico Ellipse

Designed by **Elisa Ossino**

PORCELAIN TILES - Gres Porcellanato - Grès cérame - Feinsteinzeug - Gres porcelánico - Керамический гранит



Boost Expression Mosaico Ellipse Glow
Matte **Sensitech**
37x37,8 cm - 14³/₅"x14⁷/₈"



Boost Expression Mosaico Ellipse Shell
Matte **Sensitech**
37x37,8 cm - 14³/₅"x14⁷/₈"



Boost Expression Mosaico Ellipse Camel
Matte **Sensitech**
37x37,8 cm - 14³/₅"x14⁷/₈"



Boost Expression Mosaico Ellipse Tan
Matte **Sensitech**
37x37,8 cm - 14³/₅"x14⁷/₈"

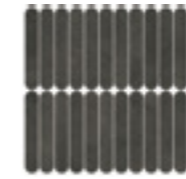
These mosaics allow you to customize a wall by choosing the grout color during the laying phase. The colors presented in these pages are mood suggestions and purely indicative. Questi mosaici permettono di personalizzare la parete attraverso la scelta del colore dello stucco durante la fase di posa. I colori presentati in queste pagine sono suggerimenti di mood e sono puramente indicativi. For the best performance of the mosaic, we recommend the use of epoxy mortars (class RG - EN 13888/ISO 13007) or decorative resins-cement, following the manufacturer's instructions. Al fine di ottenere una resa ottimale del mosaico, è consigliato l'utilizzo di malte epossidiche (classe RG - EN 13888/ISO 13007) o di resine cementizie attendendosi alle indicazioni di utilizzo fornite dal produttore.



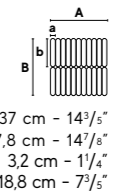
Boost Expression Mosaico Ellipse Ice
Matte **Sensitech**
37x37,8 cm - 14³/₅"x14⁷/₈"



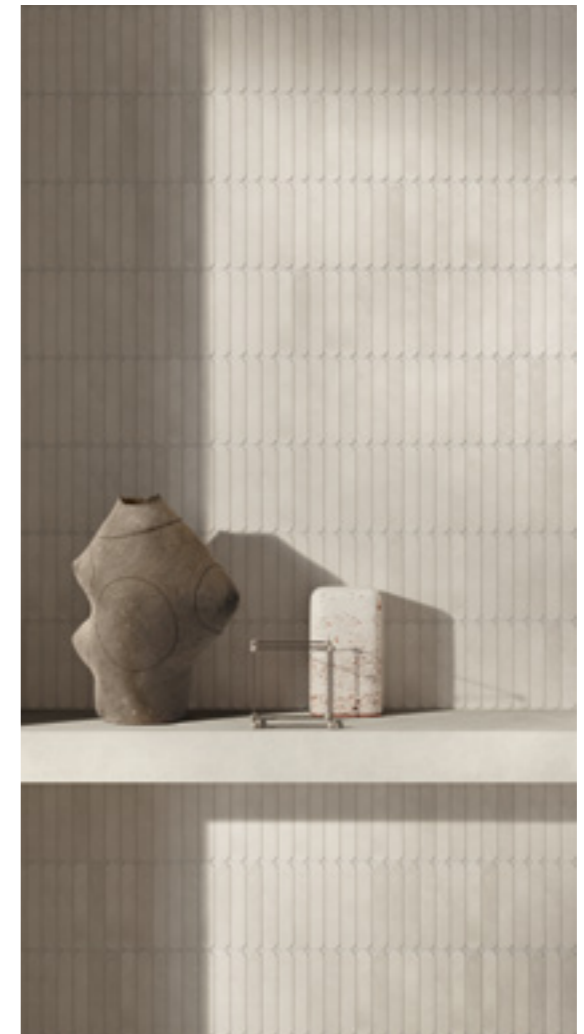
Boost Expression Mosaico Ellipse Haze
Matte **Sensitech**
37x37,8 cm - 14³/₅"x14⁷/₈"



Boost Expression Mosaico Ellipse Carbon
Matte **Sensitech**
37x37,8 cm - 14³/₅"x14⁷/₈"



± 9 mm



Trim tiles

Porcelain trim tiles

Battiscopa Matte Sensitech
 7,2x120 cm - 2⁷/₈"x47¹/₄"
 7,2x60 cm - 2⁷/₈"x23⁵/₈"
 7,2x80 cm - 2⁷/₈"x31¹/₂"

Scalino Matte Sensitech ✓
 33x120 cm - 13"x47¹/₄"
 33x60 cm - 13"x23⁵/₈"

Gradino Matte Sensitech ✓
 30x120 cm - 11³/₄"x47¹/₄"
 30x60 cm - 11³/₄"x23⁵/₈"

Scalino Ang. Matte Sensitech ✓
 33x33 cm - 13"x13"

Elemento L Grip Sensitech
 33x120 cm - 13"x47¹/₄"

Corner ± 9 mm ✓
 1x120 cm - 3³/₈"x47¹/₄"

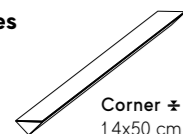


Battiscopa Sagomato Sx/Dx Matte Sensitech ✓
 7,2x30 cm - 2⁷/₈"x11³/₄"

Corner A.E. ± 9 mm
 1x1 cm - 3³/₈"x3³/₈"

✓ These parts are supplied to order / I pezzi sono disponibili su ordinazione

Wall trim tiles



Corner ± 8,5 mm * ✓
 1,4x50 cm - 5⁵/₈"x19⁵/₈"

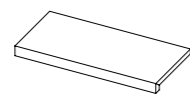
Corner A.E. ± 8,5 mm ✓
 1,4x1,4 cm - 5⁵/₈"x5⁵/₈"

* Available in / Disponibile in Oak, Cinder
 ✓ These parts are supplied to order / I pezzi sono disponibili su ordinazione

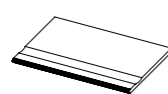
Outdoor trim tiles ± 20 mm



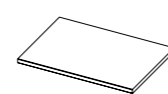
Round Outdoor Sensitech SP * ✓ ✓
 33x120 cm - 13"x47¹/₄"
 30x60 cm - 11³/₄"x23⁵/₈"



Elemento L Outdoor Sensitech SP * ✓ ✓
 33x120 cm - 13"x47¹/₄"
 33x80 cm - 13"x31¹/₂"
 33x33 cm - 13"x13"



Bordo Piscina Outdoor Sensitech * ✓ ✓
 30x60 cm - 11³/₄"x23⁵/₈"



Gradino Round Outdoor Sensitech * ✓ ✓
 30x60 cm - 11³/₄"x23⁵/₈"



Griglia Outdoor Sensitech * ✓ ✓
 15x60 cm - 5⁷/₈"x23⁵/₈"
 20x60 cm - 7⁷/₈"x23⁵/₈"



Smussato Outdoor Sensitech SP * ✓
 30x60 cm - 11³/₄"x23⁵/₈"



Alzata Outdoor Sensitech SP * ✓
 20x120 cm - 7⁷/₈"x47¹/₄"
 20x80 cm - 7⁷/₈"x31¹/₂"



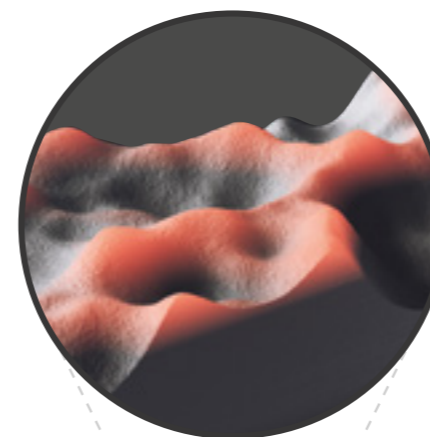
Curve Outdoor Sensitech SP * ✓
 60x60 cm - 23⁵/₈"x23⁵/₈"

* Available in / Disponibile in Oak, Cinder
 ✓ These parts are supplied to order / I pezzi sono disponibili su ordinazione
 ◆ Right-left angular elements are available / Sono disponibili gli elementi angolari dx/sx

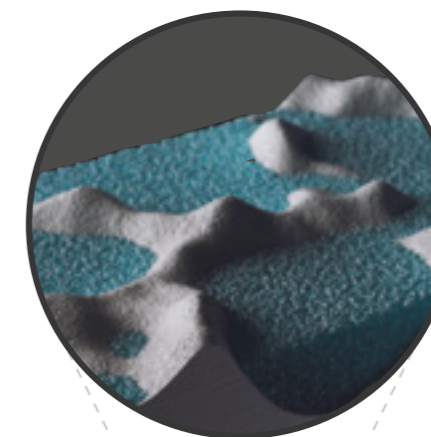
Outdoor Porcelain tiles ± 20 mm

For further details on the 20mm thick products, related trim pieces and installation systems - in particular for recommendations and precautions during installation- please refer to the Outdoor Design section on the Atlas Concorde website or to the Outdoor Design catalogue. Per dettagli sul prodotto e sui relativi pezzi speciali in 20mm di spessore, per i sistemi di posa e, in particolare, per raccomandazioni, accorgimenti e precauzioni in fase di posa e progettazione, si raccomanda di prendere visione del catalogo Outdoor Design e della sezione Outdoor Design del sito Atlas Concorde.

Sensitech



Traditional anti-slip surface



The innovative Sensitech Surface

INDEX



INSPIRATION



THE COLLECTION



SURFACE RANGE & TECHNICAL SPECS



BOOST EXPRESSION RANGE
 SENSITECH
 TECHNICAL SPECIFICATIONS

MORE INFORMATION



ENJOY THE VIDEO



Sensitech is the high-tech surface for indoor and outdoor settings created by Atlas Concorde Laboratories, patented in Europe. The surface combines high slip resistance performance with tactile softness. With Sensitech, the meaning of surface evolves and takes on a reassuring, pleasant and practical touch, making architectural spaces more comfortable and appealing.

Sensitech è la superficie ad alto coefficiente tecnologico per gli ambienti interni ed esterni realizzata dai Laboratori Atlas Concorde, brevettata in Europa. La superficie coniuga elevate prestazioni di resistenza allo scivolamento ad una maggiore morbidezza tattile. Con Sensitech il significato di superficie si evolve e assume un tocco rassicurante, piacevole e pratico, rendendo gli spazi architettonici sempre più confortevoli e appaganti.



Porcelain tiles - Rectified monocaliber

Gres porcellanato - Rettificato monocalibro

Compliant with standards EN 14411 annex G group Bla
 Compliant with standards ISO 13006 annex G group Bla
 Conforme alla norma EN 14411 Appendice G gruppo Bla
 Conforme alla norma ISO 13006 Appendice G gruppo Bla

120x278 cm - 47 1/8" x 109 1/2" ± 6 mm
 120x120 cm - 47 1/8" x 47 1/8" ± 9 mm
 80x80 cm - 31 1/2" x 31 1/2" ± 9 mm
 60x120 cm - 23 3/8" x 47 1/8" ± 9 mm
 60x60 cm - 23 3/8" x 23 3/8" ± 9 mm
 30x60 cm - 11 1/4" x 23 3/8" ± 9 mm

120x120 cm - 47 1/8" x 47 1/8" ± 20 mm
 80x80 cm - 31 1/2" x 31 1/2" ± 20 mm
 60x120 cm - 23 3/8" x 47 1/8" ± 20 mm
 60x60 cm - 23 3/8" x 23 3/8" ± 20 mm

Technical features Caratteristiche tecniche	Test Method Metodo di prova	Requirements for nominal size N / Requisiti per dimensione nominale N				Porcelain tiles			
		7 cm ≤ N < 15 cm		N ≥ 15 cm		Matte ± 6 mm	Matte Sensitech ± 9 mm	Grip Sensitech ± 9 mm	Outdoor Sensitech ± 20 mm
		(mm)	(%)	(mm)					
Length and width Lunghezza e larghezza		± 0,9 (*) Non-rect. ± 0,4 (*) Rect.	± 0,6 (*) Non-rect. ± 0,3 (*) Rect.	± 2,0 (*) Non-rect. ± 1,0 (*) Rect.	Suitable for Conforme	Suitable for Conforme	Suitable for Conforme	Suitable for Conforme	
Thickness Spessore		± 0,5 (**)	± 5 (**)	± 0,5 (**)	Suitable for Conforme	Suitable for Conforme	Suitable for Conforme	Suitable for Conforme	
Straightness of sides Rettilineità degli spigoli	ISO 10545-2	± 0,8 (***) Non-rect. ± 0,4 (***) Rect.	± 0,5 (***) Non-rect. ± 0,3 (***) Rect.	± 1,5 (***) Non-rect. ± 0,8 (***) Rect.	Suitable for Conforme	Suitable for Conforme	Suitable for Conforme	Suitable for Conforme	
Rectangularity (Measurement only on short edges when L/l ≥ 3) Ortogonalità (Misurazione da condurre solo sui lati corti quando L/l ≥ 3)		± 0,8 (***) Non-rect. ± 0,4 (***) Rect.	± 0,5 (***) Non-rect. ± 0,3 (***) Rect.	± 2,0 (***) Non-rect. ± 1,5 (***) Rect.	Suitable for Conforme	Suitable for Conforme	Suitable for Conforme	Suitable for Conforme	
Surface flatness Planarità	ISO 10545-2	c.c. ± 0,8 Non-rect. c.c. ± 0,6 Rect. e.c. ± 0,8 Non-rect. e.c. ± 0,6 Rect. w. ± 0,8 Non-rect. w. ± 0,6 Rect.	c.c. ± 0,5 Non-rect. c.c. ± 0,4 Rect. e.c. ± 0,5 Non-rect. e.c. ± 0,4 Rect. w. ± 0,5 Non-rect. w. ± 0,4 Rect.	c.c. ± 2,0 Non-rect. c.c. ± 1,8 Rect. e.c. ± 2,0 Non-rect. e.c. ± 1,8 Rect. w. ± 2,0 Non-rect. w. ± 1,8 Rect.	Suitable for Conforme	Suitable for Conforme	Suitable for Conforme	Suitable for Conforme	
Water absorption (in% by mass) Massa d'acqua assorbita (come % della massa)	ISO 10545-3 ASTM C373	E _v ≤ 0,5% Individual Maximum 0,6% E _v ≤ 0,5% Valore massimo singolo 0,6%			≤ 0,1 %	≤ 0,1 %	≤ 0,1 %	≤ 0,1 %	
Breaking strength Sforzo di rottura	ISO 10545-4	S ≥ 700N (for thickness < 7,5 mm - per spessore < 7,5 mm) S ≥ 1300N (for thickness ≥ 7,5 mm - per spessore ≥ 7,5 mm)			S ≥ 1000 N	S ≥ 1500 N	S ≥ 1500 N	S ≥ 10000 N	
Modulus of rupture Resistenza alla flessione		R ≥ 35 N/mm ²			R ≥ 40 N/mm ²	R ≥ 40 N/mm ²	R ≥ 40 N/mm ²	R ≥ 45 N/mm ²	
Bending strength and breaking load Resistenza a flessione e al carico di rottura (4)(5)	EN 1339 Annex F	-			-	-	-	-	
Impact resistance, as coefficient of restitution Resistenza all'impatto, espresso come coefficiente di restituzione	ISO 10545-5	Declared value Valore dichiarato			≥ 0,55	≥ 0,55	≥ 0,55	≥ 0,55	
Resistance to deep abrasion of unglazed tiles (removed volume) Resistenza all'abrasione profonda delle piastrelle non smaltate (volume materiale asportato)	ISO 10545-6	≤ 175 mm ³			≤ 150 mm ³	≤ 150 mm ³	≤ 150 mm ³	≤ 150 mm ³	
Coefficient of thermal linear expansion Coefficiente di dilatazione termica lineare	ISO 10545-8	Declared value Valore dichiarato			≤ 7MK ⁻¹	≤ 7MK ⁻¹	≤ 7MK ⁻¹	≤ 7MK ⁻¹	
Thermal shock resistance Resistenza agli sbalzi termici	ISO 10545-9	Pass according to EN ISO 10545-1 Test superato in accordo con ISO 10545-1			Resistant Resiste	Resistant Resiste	Resistant Resiste	Resistant Resiste	
Moisture expansion (in mm/m) Dilatazione all'umidità (in mm/m)	ISO 10545-10	Declared value Valore dichiarato			≤ 0,01% (0,1mm/m)	≤ 0,01% (0,1mm/m)	≤ 0,01% (0,1mm/m)	≤ 0,01% (0,1mm/m)	
Frost resistance Resistenza al gelo	ISO 10545-12	Pass according to EN ISO 10545-1 Test superato in accordo con ISO 10545-1			Resistant Resiste	Resistant Resiste	Resistant Resiste	Resistant Resiste	
Bond strenght /adhesion for Cementitious Adhesives Adesione mediante trazione su adesivi cementizi	EN 12004-2	Declared value Valore dichiarato			≥ 1,0 N/mm ² (Class C2 - EN 12004)	≥ 1,0 N/mm ² (Class C2 - EN 12004)	≥ 1,0 N/mm ² (Class C2 - EN 12004)	≥ 1,0 N/mm ² (Class C2 - EN 12004)	
Reaction to fire Reazione al fuoco	-	Class A1 or A1 _f Classe A1 oppure A1 _f			A1 - A1 _f	A1 - A1 _f	A1 - A1 _f	A1 - A1 _f	
Resistance to household chemicals and swimming pool salts Resistenza ai prodotti chimici di uso domestico e agli additivi per piscina		Minimum Class B Classe minima B			A	A	A	A	
Resistance to low concentrations of acids and alkalis Resistenza a basse concentrazioni di acidi e alcali	ISO 10545-13	Declared Class Classe dichiarata			LA	LA	LA	LA	
Resistance to high concentrations of acids and alkalis Resistenza ad alte concentrazioni di acidi e alcali		Declared Class Classe dichiarata			HA	HA	HA	HA	
Resistance to staining for unglazed tiles Resistenza alle macchie per piastrelle non smaltate	ISO 10545-14	Declared Class Classe dichiarata			5	5	5	5	
Shood Ramp Test Metodo della rampa "calzato"	DIN EN 16165 ANNEX B (EX DIN 5130)	Declared value Valore dichiarato			R9	R10	R11	R11	
Barefoot Ramp Test Metodo della rampa a piedi nudi	DIN EN 16165 ANNEX A (EX DIN 51097)	Declared value Valore dichiarato			A	A+B	A+B+C	A+B+C	
Pendulum Friction Test Metodo del Pendolo	BS EN 16165 ANNEX C (EX BS 7976) (1)(2)	PTV ≥ 36 classifies the surface as "low slip risk"			(*)	≥ 36 Dry ≥ 36 Wet	≥ 36 Dry ≥ 36 Wet	≥ 36 Dry ≥ 36 Wet	
	AS 4586	Declared Classification of the new pedestrian surface materials according to the Pendulum Test			(**)	Class P3	Class P4	Class P4	
	UNE EN 16165 ANNEX C (EX UNE 41901 EX2077)	Declared value Valore dichiarato			(***)	Class C2	Class C3	Class C3	
Coefficient of friction (COF) Coefficiente di attrito	B.C.R.A. Rep. CEC/81	D.M. 236/89 del 14/06/89 μ > 0,40 per elemento scivolante cuoio su pavimentazione asciutta μ > 0,40 per elemento scivolante gomma dura su pavimentazione bagnata			> 0,40 Asciutto > 0,40 Bagnato	> 0,40 Asciutto > 0,40 Bagnato	> 0,40 Asciutto > 0,40 Bagnato	> 0,40 Asciutto > 0,40 Bagnato	
Dynamic coefficient of friction (DCOF) Coefficiente di attrito dinamico	ANSI A 326,3	-			dry DCOF ≥ 0,42	wet DCOF ≥ 0,50	wet DCOF ≥ 0,55	wet DCOF ≥ 0,55	

(*) The permissible deviation, in % or mm, of the average size for each tile (2 or 4 sides) from work size (WS). Deviazione ammissibile, in % oppure mm, della dimensione media di ogni piastrella (2 oppure 4 lati) dalla dimensione di fabbricazione (WS).
 (***) The permissible deviation, in % or mm, of the average thickness for each tile from the work size thickness (WS). Deviazione ammissibile, in % oppure mm, dello spessore medio di ogni piastrella dallo spessore riportato nella dimensione di fabbricazione (WS).
 (***) The maximum permissible deviation from straightness, in % or mm, related to the corresponding work sizes (WS). Deviazione massima ammissibile di rettilineità, in % oppure mm, in rapporto alle dimensioni di fabbricazione (WS) corrispondenti.
 (***) The maximum permissible deviation from rectangularity, in % or mm, related to the corresponding work sizes (WS). Deviazione massima ammissibile di ortogonalità, in % oppure mm, in rapporto alle dimensioni di fabbricazione (WS) corrispondenti.
 (c.c.) The maximum permissible deviation from centre curvature, in % or mm, related to the corresponding work sizes (WS). Deviazione massima ammissibile della curvatura del centro, in % oppure mm, in rapporto alla diagonale calcolata secondo le dimensioni di fabbricazione (WS).
 (e.c.) The maximum permissible deviation from edge curvature, in % or mm, related to the corresponding work sizes (WS). Deviazione massima ammissibile della curvatura dello spigolo, in % oppure mm, in rapporto alle dimensioni di fabbricazione (WS) corrispondenti.
 (w) The maximum permissible deviation from warpage, in % or mm, related to diagonal calculated from the work sizes (WS). Deviazione massima ammissibile dello sverglamento, in % oppure mm, in rapporto alla diagonale calcolata secondo le dimensioni di fabbricazione (WS).
 (1) Determination of slip resistance of pedestrian surfaces; it does not cover sports surfaces and road surfaces for vehicles (skid resistance). Determinazione della resistenza allo scivolamento delle superfici pedonabili; non si applica alle pavimentazioni sportive ed alle pavimentazioni stradali veicolari.
 (2) Anti-slip performance is guaranteed at the time of delivery of the product. Le prestazioni anti-slip vengono garantite al momento della consegna del prodotto.
 (4) For further details, please refer to outdoor design general catalogue. Per maggiori informazioni riferirsi al catalogo generale Outdoor Design.
 (5) Only for products with 20 mm thickness. Solo per prodotti a 20mm di spessore.
 (a) PTV ≥ 36 Wet on demand / su richiesta (**) P3 on demand / su richiesta (***) C2 on demand / su richiesta



Wall tiles - Rectified monocaliber

Rivestimento - Rettificato monocalibro

Compliant with standards EN 14411 annex L group Bill
 Compliant with standards ISO 13006 annex L group Bill
 Conforme alla norma EN 14411 Appendice L gruppo Bill
 Conforme alla norma ISO 13006 Appendice L gruppo Bill

50x120 cm - 19 1/8" x 47 1/8" ± 8,5 mm
 50x120 cm - 19 1/8" x 47 1/8" ± 10 mm

Technical features Caratteristiche tecniche	Test Method Metodo di prova	Requirements for nominal size N / Requisiti per dimensione nominale N			Wall tiles	
		7 cm ≤ N < 15 cm	N ≥ 15 cm			
		(mm)	(%)	(mm)		
Length and width Lunghezza e larghezza		± 0,4 (*) Rect.	± 0,3 (*) Rect.	± 1,0 (*) Rect.	Suitable for Conforme	
Thickness Spessore		± 0,5 (**)	± 10 (**)	± 0,5 (**)	Suitable for Conforme	
Straightness of sides Rettilineità degli spigoli	ISO 10545-2	± 0,4 (***) Rect.	± 0,3 (***) Rect.	± 0,8 (***) Rect.	Suitable for Conforme	
Rectangularity (Measurement only on short edges when L/l ≥ 3) Ortogonalità (Misurazione da condurre solo sui lati corti quando L/l ≥ 3)		± 0,4 (***) Rect.	± 0,3 (***) Rect.	± 1,5 (***) Rect.	Suitable for Conforme	
Surface flatness Planarità	ISO 10545-2	c.c. ± 0,6 Rect. e.c. ± 0,6 Rect. w. ± 0,6 Rect.	c.c. ± 0,4 Rect. e.c. ± 0,4 Rect. w. ± 0,4 Rect.	c.c. ± 1,8 Rect. e.c. ± 1,8 Rect. w. ± 1,8 Rect.	Suitable for Conforme	Suitable for Conforme
Water absorption (in% by mass) Massa d'acqua assorbita (come % della massa)	ISO 10545-3	Average >10%. When the average > 20%, this shall be indicated. Individual value > 9% Media >10%. Se questo valore > 20%, deve essere indicato. Valore Singolo > 9%			10% < E _v ≤ 20%	
Breaking strength Sforzo di rottura	ISO 10545-4	S ≥ 600 N			S ≥ 600 N	
Modulus of rupture Resistenza alla flessione		R ≥ 15 N/mm ²			R ≥ 15 N/mm ²	
Coefficient of thermal linear expansion Coefficiente di dilatazione termica lineare	ISO 10545-8	Declared value Valore dichiarato			≤ 7MK ⁻¹	
Thermal shock resistance Resistenza agli sbalzi termici	ISO 10545-9	Pass according to EN ISO 10545-1 Test superato in accordo con ISO 10545-1			Resistant Resiste	
Moisture expansion (in mm/m) Dilatazione all'umidità (in mm/m)	ISO 10545-10	Declared value Valore dichiarato			≤ 0,06% (0,6mm/m)	
Crazing resistance Resistenza al cavillo	ISO 10545-11	Pass according to EN ISO 10545-1 Test superato in accordo con ISO 10545-1			Resistant Resiste	
Bond strenght /adhesion for Cementitious Adhesives Adesione mediante trazione su adesivi cementizi	EN 12004-2	Declared value Valore dichiarato			≥ 1,0 N/mm ² (Class C2 - EN 12004)	
Reaction to fire Reazione al fuoco	-	Class A1 Classe A1			A1	
Resistance to household chemicals and swimming pool salts Resistenza ai prodotti chimici di uso domestico e agli additivi per piscina		Minimum Class B Classe minima B			A	
Resistance to low concentrations of acids and alkalis Resistenza a basse concentrazioni di acidi e alcali	ISO 10545-13	Declared Class Classe dichiarata			LA	
Resistance to high concentrations of acids and alkalis Resistenza ad alte concentrazioni di acidi e alcali		Declared Class Classe dichiarata			HA	
Resistance to staining, for unglazed tiles Resistenza alle macchie per piastrelle non smaltate	ISO 10545-14	Minimum Class 3 Classe 3 minima			5	
Release of dangerous substances: Cadmium (in mg/dm²) and Lead (in mg/dm²) Rilascio di sostanze pericolose: Cadmio (in mg/dm ²) e Piombo (in mg/dm ²)	ISO 10545-15	Declared value Valore dichiarato			≤ 0,01 mg/dm ² Cd ≤ 0,1 mg/dm ² Pb	

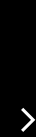
(*) The permissible deviation, in % or mm, of the average size for each tile (2 or 4 sides) from work size (WS). Deviazione ammissibile, in % oppure mm, della dimensione media di ogni piastrella (2 oppure 4 lati) dalla dimensione di fabbricazione (WS).
 (***) The permissible deviation, in % or mm, of the average thickness for each tile from the work size thickness (WS). Deviazione ammissibile, in % oppure mm, dello spessore medio di ogni piastrella dallo spessore riportato nella dimensione di fabbricazione (WS).
 (***) The maximum permissible deviation from straightness, in % or mm, related to the corresponding work sizes (WS). Deviazione massima ammissibile di rettilineità, in % oppure mm, in rapporto alle dimensioni di fabbricazione (WS) corrispondenti.
 (***) The maximum permissible deviation from rectangularity, in % or mm, related to the corresponding work sizes (WS). Deviazione massima ammissibile di ortogonalità, in % oppure mm, in rapporto alle dimensioni di fabbricazione (WS) corrispondenti.
 (c.c.) The maximum permissible deviation from centre curvature, in % or mm, related to diagonal calculated from the work sizes (WS). Deviazione massima ammissibile della curvatura del centro, in % oppure mm, in rapporto alla diagonale calcolata secondo le dimensioni di fabbricazione (WS).
 (e.c.) The maximum permissible deviation from edge curvature, in % or mm, related to the corresponding work sizes (WS). Deviazione massima ammissibile della curvatura dello spigolo, in % oppure mm, in rapporto alle dimensioni di fabbricazione (WS) corrispondenti.
 (w) The maximum permissible deviation from warpage, in % or mm, related to diagonal calculated from the work sizes (WS). Deviazione massima ammissibile dello sverglamento, in % oppure mm, in rapporto alla diagonale calcolata secondo le dimensioni di fabbricazione (WS).

Note

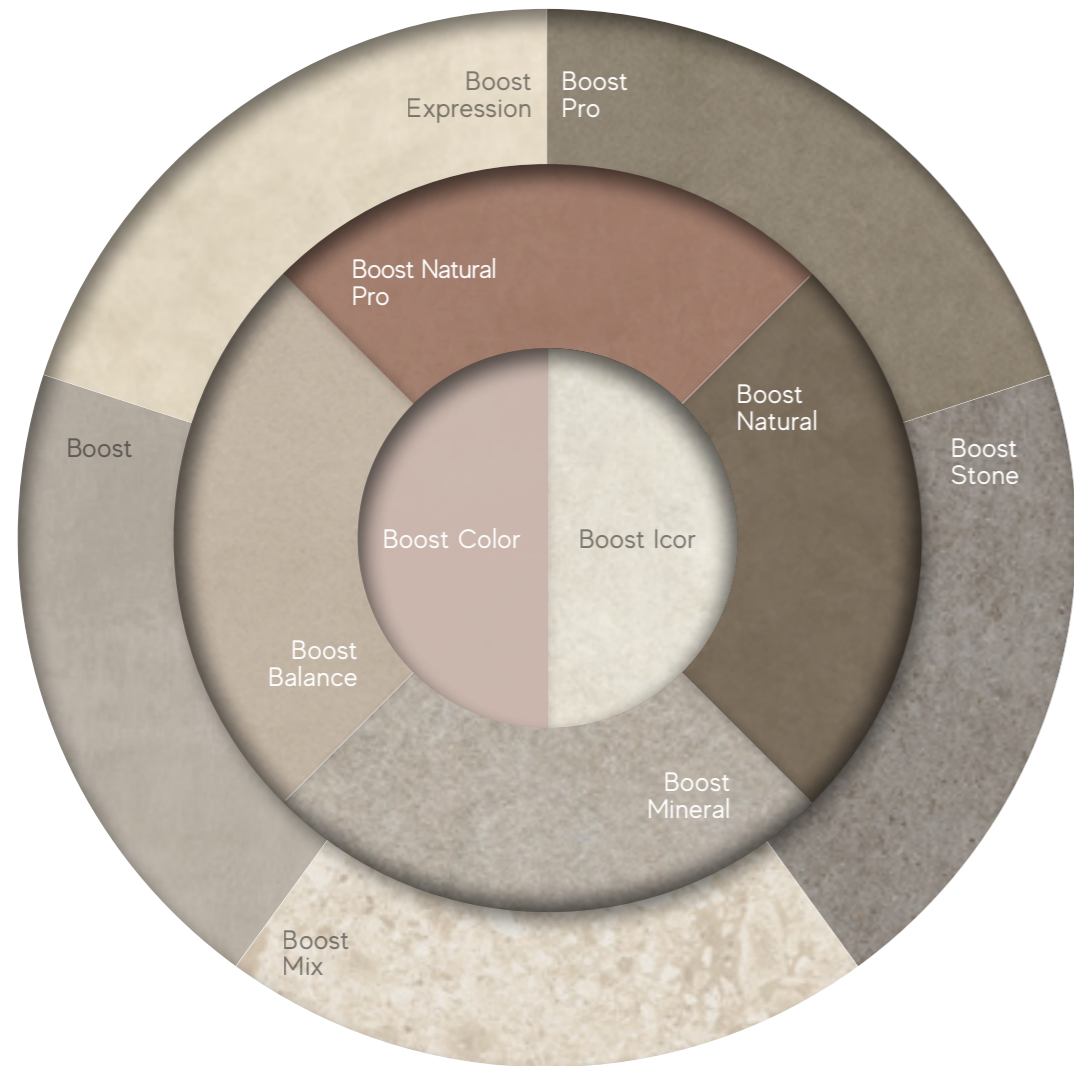
For information and details relating to codes, packaging and weight it is recommended to refer to the latest pricelist. - Per le informazioni e i dati relativi a codici, imballaggi e pesi occorre sempre consultare l'ultimo listino aggiornato e in vigore. - Pour toutes informations et renseignements concernant les codes, les emballages et les poids, il y a toujours lieu de consulter le dernier tarif en vigueur et mis à jour. - Für Informationen und Daten die den Code, die Verpackung und das Gewicht betreffen bitte die aktuellste Preisliste zugrunde legen. - Para acceder a la información y a los datos relativos a códigos, embalajes y pesos hay que consultar siempre la última lista de precios actualizada y vigente. - Для информации о кодах, упаковках и весе обращайтесь к последнему действующему прайс-листу.

Colors and optical features of the materials illustrated in this catalogue are to be regarded as mere indications. - I colori e le caratteristiche estetiche dei materiali illustrati nel presente catalogo sono da ritenersi puramente indicativi. - Les coloris et les caractéristiques esthétiques des références illustrées dans le catalogue sont donnés à titre purement indicatif. - Die Farben und die ästhetischen Eigenschaften der in diesem Katalog abgebildeten Produkte sind als reine Richtwerte zu betrachten. - Los colores y las características estéticas de los materiales ilustrados en el presente catálogo deben ser considerados como puramente indicativos. - Цвета и эстетические характеристики описанных в настоящем каталоге материалов являются только ориентировочными.

Atlas Concorde reserves the right to modify any product without notice and will not be liable for any direct or indirect damage resulting from such modifications. - Atlas Concorde si riserva di modificare i prodotti senza preavviso, declinando ogni responsabilità su eventuali danni diretti o indiretti derivanti da eventuali modifiche. - Atlas Concorde se réserve le droit de modifier ses produits sans préavis et décline toute responsabilité concernant les éventuels dommages directs ou indirects qui pourraient dériver de ces modifications. - Atlas Concorde behält sich das Recht vor jederzeit und ohne vorherige Ankündigung, die Produkte zu verändern, und lehnt jede Haftung bei direkten oder indirekten Schäden ab, die von diesen Veränderungen herrühren. - Atlas Concorde se reserva el derecho de modificar los productos sin previo aviso, rechaza cualquier responsabilidad sobre eventuales daños directos o indirectos derivados de eventuales modificaciones. - Atlas Concorde оставляет за собой право изменять характеристики изделий без предварительного уведомления, отклоняя при этом любую ответственность за прямые или косвенные убытки, возникшие в результате изменений.



BOOSTWORLD



Boost your style

Boost World is a design tool that combines ceramic surfaces in their inspiration, style, and tone, allowing for coordinated solutions in any space.

Boost World è uno strumento progettuale che coniuga in un'unica prospettiva superfici ceramiche differenti per ispirazione ma affini per stile e tonalità, consentendo soluzioni coordinate in ogni destinazione d'uso.

DISCOVER
BOOST WORLD



Ethical Identity



For Atlas Concorde, being Made in Italy is not just a prestigious certification of style, design, and production excellence, but an identity that involves all aspects of its business. For this reason, we identify with the values expressed by Confindustria Ceramica's ethical code, which guarantee absolute compliance with labor regulations, and with the marks Made in Italy and Ceramics of Italy, which certify the quality of authentic Italian style.

Per Atlas Concorde, Made in Italy non è solo un prestigioso attestato di stile, design ed eccellenza produttiva, ma un modo di essere che coinvolge tutti gli aspetti della propria attività. Per questo ci riconosciamo nei valori espressi dal codice etico di Confindustria Ceramica, che garantiscono il rispetto assoluto delle normative sul lavoro, e nei marchi Made in Italy e Ceramics of Italy, che certificano la qualità dell'autentico stile italiano.

Certifications

Company certifications / Certificazioni aziendali



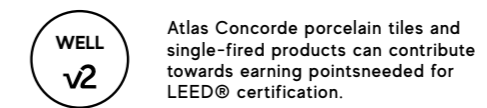
Product certifications / Certificazioni di prodotto



Product declarations / Dichiarazioni di prodotto



Certification for buildings / Rating dell'edificio



Certifications for export to international markets*



Ratings and memberships



* Shipments can be made in accordance with national requirements anywhere in the world, even in markets with complex customs procedures such as Egypt, Morocco and Kurdistan, thanks to our active cooperation with accredited certification bodies in each country. - Possibilità di spedizioni conformi alle prescrizioni nazionali ovunque nel mondo, anche in mercati con procedure doganali complesse come Egitto, Marocco, Kurdistan, grazie alla collaborazione sempre attiva con gli enti di certificazione accreditati in ciascun paese. - Dank unserer aktiven Zusammenarbeit mit den akkreditierten Zertifizierungsstellen in den einzelnen Ländern können die Sendungen in Übereinstimmung mit den nationalen Anforderungen überall auf der Welt versandt werden, selbst auf Märkten mit komplexen Zollverfahren wie Ägypten, Marokko und Kurdistan. - Possibilité d'expéditions conformes aux prescriptions nationales partout dans le monde, même sur les marchés dont les procédures douanières sont complexes comme l'Égypte, le Maroc ou le Kurdistan, grâce à la collaboration toujours active avec les organismes de certification homologués dans chaque pays. - Se pueden realizar envíos según la normativa nacional a cualquier parte del mundo, incluso a mercados con procedimientos aduaneros complejos como Egipto, Marruecos o Kurdistan, gracias a la cooperación permanente con los organismos de certificación acreditados en cada país. - Компания имеет возможность осуществлять поставки в любую точку мира в соответствии с национальными требованиями, даже на рынках со сложными таможенными процедурами, таких как Египет, Марокко, Курдистан, благодаря неизменно активному сотрудничеству с аккредитованными органами сертификации в каждой стране.

⁽¹⁾ Classificazione UPEC aggiornata al - Classement UPEC mis à jour au: 2024

⁽²⁾ Si consiglia la consultazione della pagina - On vous conseille de vous connecter à: <https://database.cstb.fr/holderdetails?UId=ETB-2094&AppRef=QB32>

⁽³⁾ Per ulteriori informazioni scrivere a - Pour tous renseignements complémentaires merci d'écrire à: france@atlasconcorde.it

⁽⁴⁾ Tutti i prodotti Atlas Concorde in gres porcellanato e in monocottura in pasta bianca possono essere utilizzati per progetti edili che seguono le linee guida del GREEN BUILDING COUNCIL e possono contribuire all'ottenimento del rating LEED V4 degli edifici.

All Atlas Concorde porcelain tiles and white-body single-fired products can be used for building projects that follow the guidelines of the GREEN BUILDING COUNCIL and can contribute to the achievement of the LEED V4 rating for buildings.





atlasconcorde.com

Copyright 2024 by Ceramiche Atlas Concorde S.p.A
(41042 Spezzano di Fiorano (MO) - Italia)
September 2024